

## BAD Antibody

Catalog No: #33154

Package Size: #33154-1 50ul #33154-2 100ul

Orders: [order@signalwayantibody.com](mailto:order@signalwayantibody.com)Support: [tech@signalwayantibody.com](mailto:tech@signalwayantibody.com)

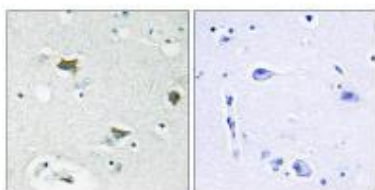
## Description

Product Name	BAD Antibody
Host Species	Rabbit
Clonality	Polyclonal
Purification	The antibody was affinity-purified from rabbit antiserum by affinity-chromatography using epitope-specific immunogen.
Applications	IHC
Species Reactivity	Hu Ms
Specificity	The antibody detects endogenous levels of total BAD protein
Immunogen Type	Peptide
Immunogen Description	Synthesized peptide derived from Internal of human BAD.
Target Name	BAD
Other Names	BAD; BBC6; BCL2L8; Bcl- XL/Bcl-2 associated death promoter; Bcl-2 binding component 6
Accession No.	Swiss-Prot: Q92934NCBI Gene ID: 572
Uniprot	Q92934
GeneID	572;
SDS-PAGE MW	18kd
Concentration	1.0mg/ml
Formulation	Rabbit IgG in phosphate buffered saline (without Mg <sup>2+</sup> and Ca <sup>2+</sup> ), pH 7.4, 150mM NaCl, 0.02% sodium azide and 50% glycerol.
Storage	Store at -20°C

## Application Details

Immunohistochemistry: 1:50~1:100

## Images



Immunohistochemistry analysis of paraffin-embedded human breast carcinoma tissue using BAD antibody #33154.

## Background

---

Promotes cell death. Successfully competes for the binding to Bcl-X(L), Bcl-2 and Bcl-W, thereby affecting the level of heterodimerization of these proteins with BAX. Can reverse the death repressor activity of Bcl-X(L), but not that of Bcl-2 By similarity. Appears to act as a link between growth factor receptor signaling and the apoptotic pathways.

Wang H.-G., Cell 87:629-638(1996).

Ottile S., J. Biol. Chem. 272:30866-30872(1997).

The MGC Project Team, Genome Res. 14:2121-2127(2004).

---

Note: This product is for in vitro research use only