

ILK (Ab-246) Antibody

Catalog No: #33229

Package Size: #33229-1 50ul #33229-2 100ul

Orders: order@signalwayantibody.comSupport: tech@signalwayantibody.com

Description

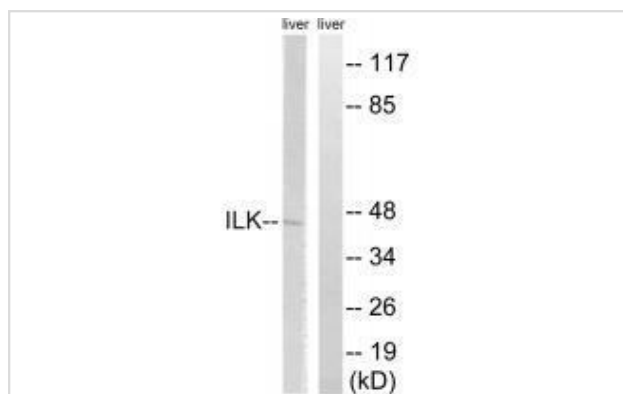
Product Name	ILK (Ab-246) Antibody
Host Species	Rabbit
Clonality	Polyclonal
Purification	The antibody was affinity-purified from rabbit antiserum by affinity-chromatography using epitope-specific immunogen.
Applications	WB IHC
Species Reactivity	Hu Rt
Specificity	The antibody detects endogenous levels of total ILK protein.
Immunogen Type	Peptide
Immunogen Description	Synthesized non-phosphopeptide derived from human ILK around the phosphorylation site of serine 246 (I-F-S(p)-H-P).
Target Name	ILK
Other Names	59 kDa serine/threonine protein kinase; EC 2.7.11.1; ILK-1; ILK1; Integrin-linked protein kinase
Accession No.	Swiss-Prot: Q13418NCBI Gene ID: 3611
Uniprot	Q13418
GeneID	3611;
SDS-PAGE MW	42kd
Concentration	1.0mg/ml
Formulation	Rabbit IgG in phosphate buffered saline (without Mg ²⁺ and Ca ²⁺), pH 7.4, 150mM NaCl, 0.02% sodium azide and 50% glycerol.
Storage	Store at -20°C

Application Details

Western blotting: 1:500~1:3000

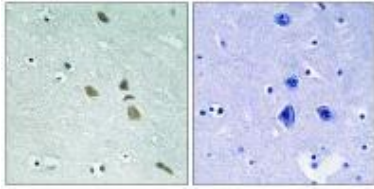
Immunohistochemistry: 1:50~1:100

Images



Western blot analysis of extracts from rat liver cells, using ILK (Ab-246) antibody #33229.

Immunohistochemistry analysis of paraffin-embedded human brain tissue using ILK (Ab-246) antibody #33229.



Background

Receptor-proximal protein kinase regulating integrin-mediated signal transduction. May act as a mediator of inside-out integrin signaling. Focal adhesion protein part of the complex ILK-PINCH. This complex is considered to be one of the convergence points of integrin- and growth factor-signaling pathway. Could be implicated in mediating cell architecture, adhesion to integrin substrates and anchorage-dependent growth in epithelial cells. Phosphorylates beta-1 and beta-3 integrin subunit on serine and threonine residues, but also AKT1 and GSK3B.

Hannigan G.E., Nature 379:91-96(1996).

Janji B., Oncogene 19:3069-3077(2000).

Tadic B., Submitted (MAR-2000) to the EMBL/GenBank/DDBJ databases.

Note: This product is for in vitro research use only