

MAK (Ab-159) Antibody

Catalog No: #33233

Package Size: #33233-1 50ul #33233-2 100ul

Orders: order@signalwayantibody.comSupport: tech@signalwayantibody.com

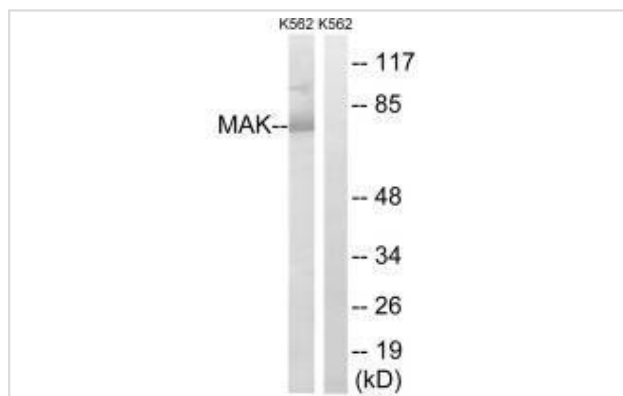
Description

Product Name	MAK (Ab-159) Antibody
Host Species	Rabbit
Clonality	Polyclonal
Purification	The antibody was affinity-purified from rabbit antiserum by affinity-chromatography using epitope-specific immunogen.
Applications	WB
Species Reactivity	Hu
Specificity	The antibody detects endogenous levels of total MAK protein.
Immunogen Type	Peptide
Immunogen Description	Synthesized peptide derived from Internal of human MAK.
Target Name	MAK
Other Names	EC 2.7.11.22; Male germ cell-associated kinase; Serine/threonine-protein kinase MAK;
Accession No.	Swiss-Prot: P20794NCBI Gene ID: 4117
Uniprot	P20794
GeneID	4117;
SDS-PAGE MW	71kd
Concentration	1.0mg/ml
Formulation	Rabbit IgG in phosphate buffered saline (without Mg ²⁺ and Ca ²⁺), pH 7.4, 150mM NaCl, 0.02% sodium azide and 50% glycerol.
Storage	Store at -20°C

Application Details

Western blotting: 1:500~1:3000

Images



Western blot analysis of extracts from K562 cells, using MAK (Ab-159) antibody #33233.

Background

Essential for the regulation of ciliary length and required for the long-term survival of photoreceptors By similarity. Phosphorylates FZR1 in a cell cycle-dependent manner. Plays a role in the transcriptional coactivation of AR. Could play an important function in spermatogenesis. May play a role in chromosomal stability in prostate cancer cells.

Mungall A.J., Nature 425:805-811(2003).

Matsushime H., Mol. Cell. Biol. 10:2261-2268(1990).

Greenman C., Nature 446:153-158(2007).

Note: This product is for in vitro research use only