

Jak2(Ab-570) Antibody

Catalog No: #21522

Package Size: #21522-1 50ul #21522-2 100ul

Orders: order@signalwayantibody.comSupport: tech@signalwayantibody.com

Description

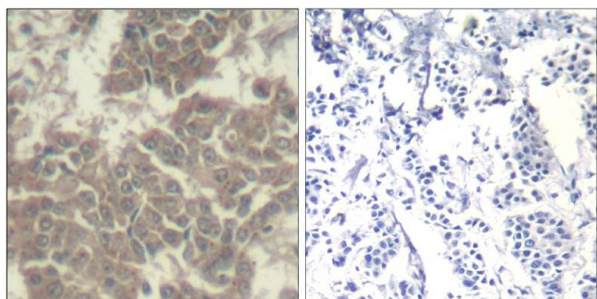
Product Name	Jak2(Ab-570) Antibody
Host Species	Rabbit
Clonality	Polyclonal
Purification	Antibodies were produced by immunizing rabbits with synthetic peptide and KLH conjugates. Antibodies were purified by affinity-chromatography using epitope-specific peptide.
Applications	IHC
Species Reactivity	Hu Rt
Specificity	The antibody detects endogenous level of total Jak2 protein.
Immunogen Type	Peptide-KLH
Immunogen Description	Peptide sequence around aa.568~572 (G-D-Y-G-Q) derived from Human JAK2.
Target Name	Jak2
Other Names	JAK-2; Janus kinase 2; kinase Jak2
Accession No.	Swiss-Prot: O60674NCBI Protein: NP_004963.1
Uniprot	O60674
GeneID	3717;
Concentration	1.0mg/ml
Formulation	Supplied at 1.0mg/mL in phosphate buffered saline (without Mg ²⁺ and Ca ²⁺), pH 7.4, 150mM NaCl, 0.02% sodium azide and 50% glycerol.
Storage	Store at -20°C for long term preservation (recommended). Store at 4°C for short term use.

Application Details

Predicted MW: 125kd

Immunohistochemistry: 1:50~1:100

Images



Immunohistochemical analysis of paraffin-embedded human breast carcinoma tissue using Jak2(Ab-570) Antibody #21522(left) or the same antibody preincubated with blocking peptide(right).

Background

Plays a role in leptin signaling and control of body weight.

Note: This product is for in vitro research use only