

NudC (Ab-326) Antibody

Catalog No: #33292

Package Size: #33292-1 50ul #33292-2 100ul

Orders: order@signalwayantibody.com

Support: tech@signalwayantibody.com

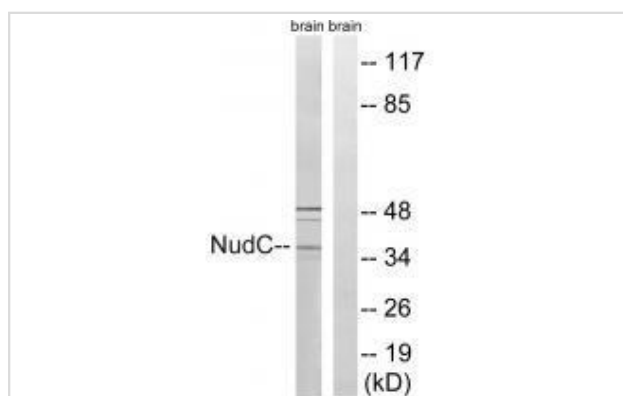
Description

Product Name	NudC (Ab-326) Antibody
Host Species	Rabbit
Clonality	Polyclonal
Purification	The antibody was affinity-purified from rabbit antiserum by affinity-chromatography using epitope-specific immunogen.
Applications	WB
Species Reactivity	Hu Rt
Specificity	The antibody detects endogenous levels of total NudC protein.
Immunogen Type	Peptide
Immunogen Description	Synthesized non-phosphopeptide derived from human NudC around the phosphorylation site of serine 326 (D-F-S(p)-K-A).
Target Name	NudC
Other Names	MNUDC protein; Nuclear distribution gene C (<i>A.nidulans</i>) homolog; SIG-92;
Accession No.	Swiss-Prot: Q9Y266NCBI Gene ID: 10726
Uniprot	Q9Y266
GeneID	10726;
SDS-PAGE MW	38kd
Concentration	1.0mg/ml
Formulation	Rabbit IgG in phosphate buffered saline (without Mg ²⁺ and Ca ²⁺), pH 7.4, 150mM NaCl, 0.02% sodium azide and 50% glycerol.
Storage	Store at -20°C

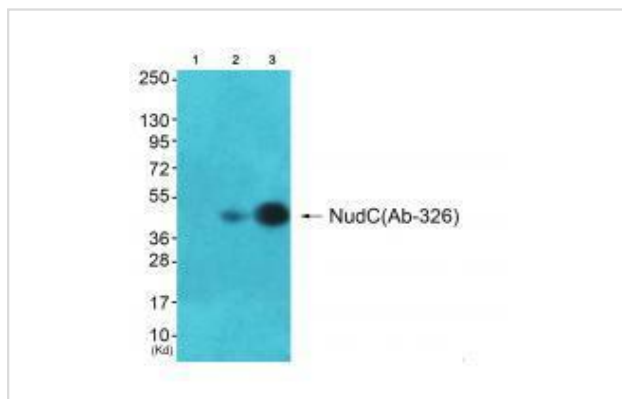
Application Details

Western blotting: 1:500~1:3000

Images



Western blot analysis of extracts from rat brain cells, using NudC (Ab-326) antibody #33292.



Western blot analysis of extracts from A549 cells and HepG2(Lane 3) cells, using NudC (Ab-326) antibody #33292. The lane on the left is treated with synthesized peptide.

Background

Plays a role in neurogenesis and neuronal migration By similarity. Necessary for correct formation of mitotic spindles and chromosome separation during mitosis. Necessary for cytokinesis and cell proliferation.

Miller B.A., Exp. Hematol. 27:742-750(1999).

Matsumoto N., Hum. Genet. 104:498-504(1999).

Wiemann S., Genome Res. 11:422-435(2001).

Note: This product is for in vitro research use only