

Cyclin A1 Antibody

Catalog No: #33350

Package Size: #33350-1 50ul #33350-2 100ul

Orders: order@signalwayantibody.comSupport: tech@signalwayantibody.com

Description

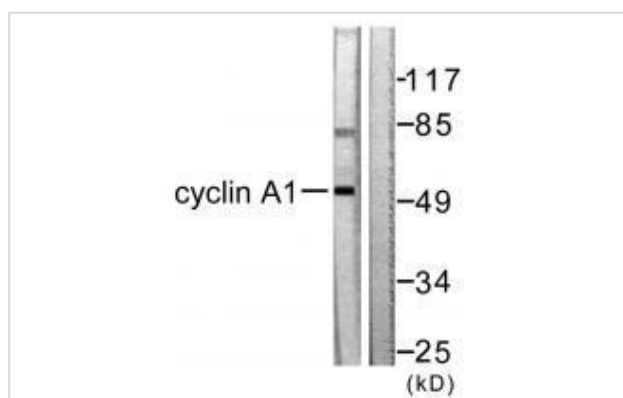
Product Name	Cyclin A1 Antibody
Host Species	Rabbit
Clonality	Polyclonal
Purification	The antibody was affinity-purified from rabbit antiserum by affinity-chromatography using epitope-specific immunogen.
Applications	WB IHC
Species Reactivity	Hu
Specificity	The antibody detects endogenous levels of total Cyclin A1 protein.
Immunogen Type	Peptide
Immunogen Description	Synthesized peptide derived from human Cyclin A1.
Target Name	Cyclin A1
Other Names	Cyclin A1;
Accession No.	Swiss-Prot: P78396NCBI Gene ID: 8900
Uniprot	P78396
GeneID	8900;
SDS-PAGE MW	52kd
Concentration	1.0mg/ml
Formulation	Rabbit IgG in phosphate buffered saline (without Mg ²⁺ and Ca ²⁺), pH 7.4, 150mM NaCl, 0.02% sodium azide and 50% glycerol.
Storage	Store at -20°C

Application Details

Western blotting: 1:500~1:3000

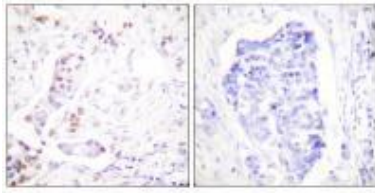
Immunohistochemistry: 1:50~1:100

Images



Western blot analysis of extracts from SKOV3 cells, using Cyclin A1 antibody #33350.

Immunohistochemical analysis of paraffin-embedded human breast carcinoma tissue using Cyclin A1 antibody #33350.



Background

May be involved in the control of the cell cycle at the G1/S (start) and G2/M (mitosis) transitions. May primarily function in the control of the germline meiotic cell cycle and additionally in the control of mitotic cell cycle in some somatic cells.

Carsten MB`B`Hller-Tidow, Mol. Cell. Biol., Oct 2004; 24: 8917 - 8928.

Rong Yang, Mol. Cell. Biol., Mar 1999; 19: 2400 - 2407

Carsten MB`B`Hller-Tidow, Blood, Apr 2001; 97: 2091 - 2097.

Sven Diederichs, J. Biol. Chem., Aug 2004; 279: 33727 - 33741.

Note: This product is for in vitro research use only