

CDK6(Ab-24) Antibody

Catalog No: #21543

Package Size: #21543-1 50ul #21543-2 100ul

Orders: order@signalwayantibody.comSupport: tech@signalwayantibody.com

Description

Product Name	CDK6(Ab-24) Antibody
Host Species	Rabbit
Clonality	Polyclonal
Purification	Antibodies were produced by immunizing rabbits with synthetic peptide and KLH conjugates. Antibodies were purified by affinity-chromatography using epitope-specific peptide.
Applications	WB IHC
Species Reactivity	Hu Ms Rt
Specificity	The antibody detects endogenous level of total CDK6 protein.
Immunogen Type	Peptide-KLH
Immunogen Description	Peptide sequence around aa.22~26 (G-A-Y-G-K) derived from Human CDK6.
Target Name	CDK6
Other Names	Serine/threonine-protein kinase PLSTIRE
Accession No.	Swiss-Prot: Q00534NCBI Protein: NP_001138778.1
Uniprot	Q00534
GeneID	1021;
Concentration	1.0mg/ml
Formulation	Supplied at 1.0mg/mL in phosphate buffered saline (without Mg ²⁺ and Ca ²⁺), pH 7.4, 150mM NaCl, 0.02% sodium azide and 50% glycerol.
Storage	Store at -20°C for long term preservation (recommended). Store at 4°C for short term use.

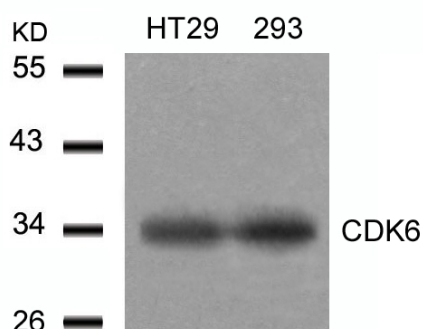
Application Details

Predicted MW: 36kd

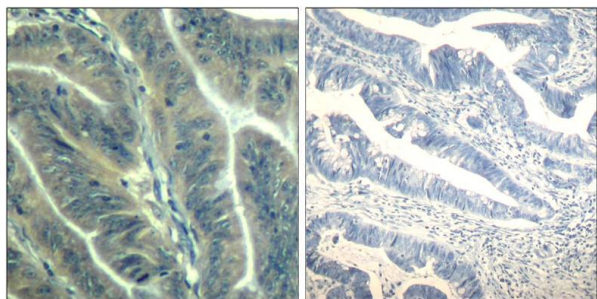
Western blotting: 1:500~1:1000

Immunohistochemistry: 1:50~1:100

Images



Western blot analysis of extracts from HT29 and 293 cells using CDK6(Ab-24) Antibody #21543.



Immunohistochemical analysis of paraffin-embedded human colon carcinoma tissue using CDK6(Ab-24) Antibody #21543(left) or the same antibody preincubated with blocking peptide(right).

Background

Probably involved in the control of the cell cycle. Interacts with D-type G1 cyclins.

Note: This product is for in vitro research use only