

## HA-Tag Rabbit Polyclonal Antibody

Catalog No: #T501

Package Size: #T501-1 50ul #T501-2 100ul

Orders: [order@signalwayantibody.com](mailto:order@signalwayantibody.com)Support: [tech@signalwayantibody.com](mailto:tech@signalwayantibody.com)

## Description

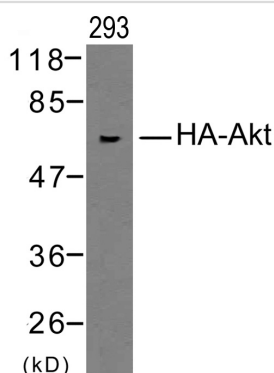
Product Name	HA-Tag Rabbit Polyclonal Antibody
Host Species	Rabbit
Clonality	Polyclonal
Purification	Antibodies were produced by immunizing rabbits with synthetic peptide and KLH conjugates. Antibodies were purified by affinity-chromatography using epitope-specific peptide.
Applications	WB
Specificity	The antibody detects HA-tagged proteins overexpressed in cells. The antibody recognizes the HA-tag fused to either the amino- or carboxy-terminus of targeted proteins in transfected cells.
Immunogen Type	Peptide
Immunogen Description	Peptide sequence (Y-P-Y-D-V-P-D-Y-A).
Target Name	HA-Tag
Concentration	1.0mg/ml
Formulation	Supplied at 1.0mg/mL in phosphate buffered saline (without Mg <sup>2+</sup> and Ca <sup>2+</sup> ), pH 7.4, 150mM NaCl, 0.02% sodium azide and 50% glycerol.
Storage	Store at -20°C for long term preservation (recommended). Store at 4°C for short term use.

## Application Details

Predicted MW: kd

Western blotting: 1:500~1:1000

## Images



Western blot analysis of extracts from 293 cells transfected with HA-tagged Akt using HA-Tag Rabbit polyclonal antibody #T501.

## Background

Epitope tags are artificial epitopes useful for the labeling and detection of proteins. Epitope tags - short amino acid sequences are 'fused' to the N- or C-terminus of the protein.

Field, J. et al. (1988) Mol. Cell. Biol. 8, 2159

---

Note: This product is for in vitro research use only