

## p14 ARF Antibody

Catalog No: #33456

Package Size: #33456-1 50ul #33456-2 100ul

Orders: [order@signalwayantibody.com](mailto:order@signalwayantibody.com)Support: [tech@signalwayantibody.com](mailto:tech@signalwayantibody.com)

## Description

Product Name	p14 ARF Antibody
Host Species	Rabbit
Clonality	Polyclonal
Purification	The antibody was affinity-purified from rabbit antiserum by affinity-chromatography using epitope-specific immunogen.
Applications	WB IHC IF
Species Reactivity	Hu
Specificity	The antibody detects endogenous levels of total p14 ARF protein.
Immunogen Type	Peptide
Immunogen Description	Synthesized peptide derived from human p14 ARF antibody.
Target Name	p14 ARF
Other Names	CDK4I; CMM2; MLM; MTS1; TP16
Accession No.	Swiss-Prot: Q8N726NCBI Gene ID: 1029
Uniprot	P42771
GeneID	1029;
SDS-PAGE MW	18kd
Concentration	1.0mg/ml
Formulation	Rabbit IgG in phosphate buffered saline (without Mg <sup>2+</sup> and Ca <sup>2+</sup> ), pH 7.4, 150mM NaCl, 0.02% sodium azide and 50% glycerol.
Storage	Store at -20°C

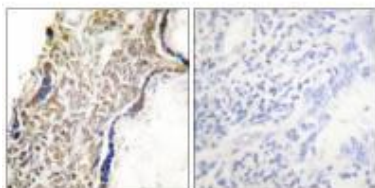
## Application Details

Western blotting: 1:500~1:3000

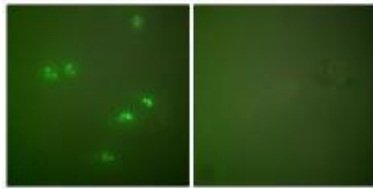
Immunohistochemistry: 1:50~1:100

Immunofluorescence: 1:100~1:500

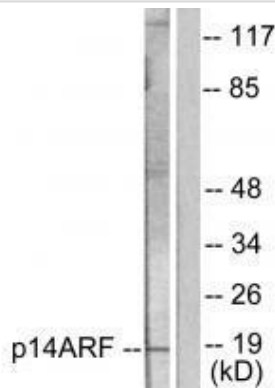
## Images



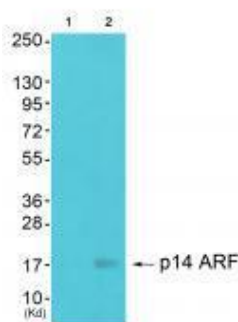
Immunohistochemical analysis of paraffin-embedded human placenta tissue using p14 ARF antibody #33456.



Immunofluorescence analysis of HeLa cells, using p14 ARF antibody #33456.



Western blot analysis of extracts from HeLa cells, using p14 ARF antibody #33456.



Western blot analysis of extracts from 293 cells (Lane 2), using p14 ARF antibody #33456. The lane on the left is treated with synthesized peptide.

## Background

Capable of inducing cell cycle arrest in G1 and G2 phases. Acts as a tumor suppressor. Binds to MDM2 and blocks its nucleocytoplasmic shuttling by sequestering it in the nucleolus. This inhibits the oncogenic action of MDM2 by blocking MDM2-induced degradation of p53 and enhancing p53-dependent transactivation and apoptosis. Also induces G2 arrest and apoptosis in a p53-independent manner by preventing the activation of cyclin B1/CDC2 complexes. Binds to BCL6 and down-regulates BCL6-induced transcriptional repression. Binds to E2F1 and MYC and blocks their transcriptional activator activity but has no effect on MYC transcriptional repression. Binds to TOP1/TOPOI and stimulates its activity. This complex binds to rRNA gene promoters and may play a role in rRNA transcription and/or maturation. Interacts with NPM1/B23 and promotes its polyubiquitination and degradation, thus inhibiting rRNA processing. Interacts with COMMD1 and promotes its 'Lys63'-linked polyubiquitination. Interacts with UBE2I/UBC9 and enhances sumoylation of a number of its binding partners including MDM2 and E2F1. Binds to HUWE1 and represses its ubiquitin ligase activity. May play a role in controlling cell proliferation and apoptosis during mammary gland development. Isoform 6 may be involved in regulation of autophagy and caspase-independent cell death; the short-lived mitochondrial isoform is stabilized by C1QBP. UniProtKB Q64364

BB" B"atrice Eymin, Mol. Cell. Biol., Jun 2006; 26: 4339 - 4350.

Guillaume Normand, J. Biol. Chem., Feb 2005; 280: 7118 - 7130.

Abel SB" B"nchez-Aguilera, Blood, Feb 2002; 99: 1411 - 1418.

Manel Esteller, Cancer Res., Apr 2001; 61: 2816 - 2821.

---

Note: This product is for in vitro research use only