

## VEGFB Antibody

Catalog No: #33540

Package Size: #33540-1 50ul #33540-2 100ul

Orders: [order@signalwayantibody.com](mailto:order@signalwayantibody.com)Support: [tech@signalwayantibody.com](mailto:tech@signalwayantibody.com)

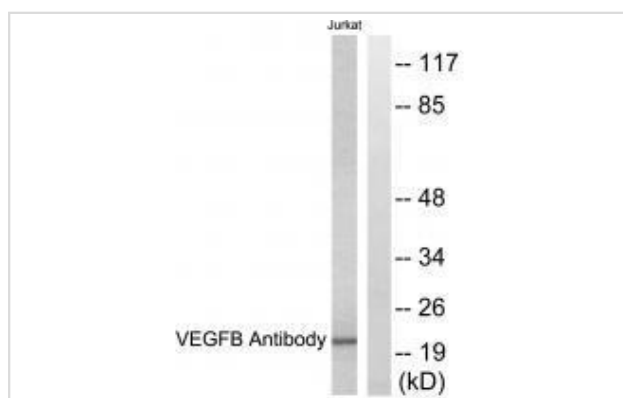
## Description

Product Name	VEGFB Antibody
Host Species	Rabbit
Clonality	Polyclonal
Purification	The antibody was affinity-purified from rabbit antiserum by affinity-chromatography using epitope-specific immunogen.
Applications	WB
Species Reactivity	Hu Ms Rt
Specificity	The antibody detects endogenous levels of total VEGFB protein.
Immunogen Type	Peptide
Immunogen Description	Synthesized peptide derived from Internal of human VEGFB.
Target Name	VEGFB
Other Names	Vascular endothelial growth factor B; VEGF-B; VEGF-related factor; VRF; VASCULAR ENDOTHELIAL GROWTH FACTOR-RELATED FACTOR
Accession No.	Swiss-Prot: P49765NCBI Gene ID: 7423
Uniprot	P49765
GeneID	7423;
SDS-PAGE MW	21kd
Concentration	1.0mg/ml
Formulation	Rabbit IgG in phosphate buffered saline (without Mg <sup>2+</sup> and Ca <sup>2+</sup> ), pH 7.4, 150mM NaCl, 0.02% sodium azide and 50% glycerol.
Storage	Store at -20°C

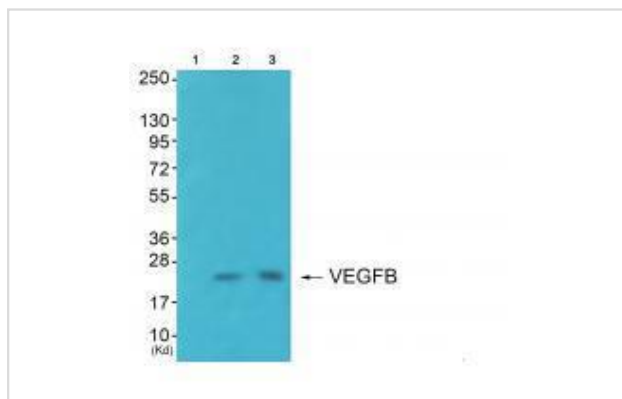
## Application Details

Western blotting: 1:500~1:3000

## Images



Western blot analysis of extracts from Jurkat cells, using VEGFB antibody #33540.



Western blot analysis of extracts from K562 cells (Lane 2) and 293 cells (Lane 3), using VEGFB antibody #33540. The lane on the left is treated with synthesized peptide.

## Background

Growth factor for endothelial cells. VEGF-B167 binds heparin and neuropilin-1 whereas the binding to neuropilin-1 of VEGF-B186 is regulated by proteolysis.

Daniela Bellomo, *Circ. Res.*, Feb 2000; 86: 29.

Maen Abdelrahim, *Cancer Res.*, Apr 2007; 67: 3286 - 3294.

Arne W. Mould, *Circ. Res.*, Sep 2005; 97: e60 - e70.

Jean Christophe Gollmer, *Neuro-oncol*, Apr 2000; 2: 80 - 86.

Note: This product is for in vitro research use only