

WNT1 Antibody

Catalog No: #33543

Package Size: #33543-1 50ul #33543-2 100ul

Orders: order@signalwayantibody.comSupport: tech@signalwayantibody.com

Description

Product Name	WNT1 Antibody
Host Species	Rabbit
Clonality	Polyclonal
Purification	The antibody was affinity-purified from rabbit antiserum by affinity-chromatography using epitope-specific immunogen.
Applications	WB IHC IF
Species Reactivity	Hu Ms
Specificity	The antibody detects endogenous levels of total WNT1 protein.
Immunogen Type	Peptide
Immunogen Description	Synthesized peptide derived from Internal of human WNT1.
Target Name	WNT1
Other Names	ONCOGENE INT1; wingless-type MMTV integration site family; member 1; INT1; Proto-oncogene protein Wnt-1 [Precursor]
Accession No.	Swiss-Prot: P04628NCBI Gene ID: 7471
Uniprot	P04628
GeneID	7471;
SDS-PAGE MW	45kd
Concentration	1.0mg/ml
Formulation	Rabbit IgG in phosphate buffered saline (without Mg ²⁺ and Ca ²⁺), pH 7.4, 150mM NaCl, 0.02% sodium azide and 50% glycerol.
Storage	Store at -20°C

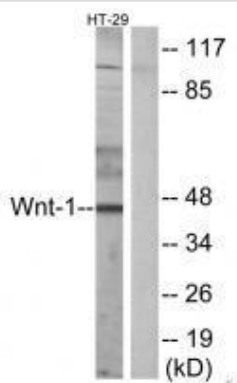
Application Details

Western blotting: 1:500~1:3000

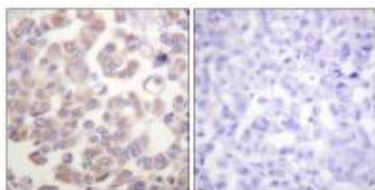
Immunohistochemistry: 1:50~1:100

Immunofluorescence: 1:100~1:500

Images



Western blot analysis of extracts from HT-29 cells, using WNT1 antibody #33543.



Immunohistochemistry analysis of paraffin-embedded human breast carcinoma tissue, using WNT1 antibody #33543.



Immunofluorescence analysis of COS-7 cells, using WNT1 antibody #33543.

Background

Ligand for members of the frizzled family of seven transmembrane receptors. In some developmental processes, is also a ligand for the coreceptor RYK, thus triggering Wnt signaling. Probable developmental protein. May be a signaling molecule important in CNS development. Is likely to signal over only few cell diameters. Has a role in osteoblast function and bone development.

van Ooyen A., EMBO J. 4:2905-2909(1985).

The MGC Project Team; Genome Res. 14:2121-2127(2004).

Note: This product is for in vitro research use only