

XPF Antibody

Catalog No: #33545

Package Size: #33545-1 50ul #33545-2 100ul

Orders: order@signalwayantibody.comSupport: tech@signalwayantibody.com

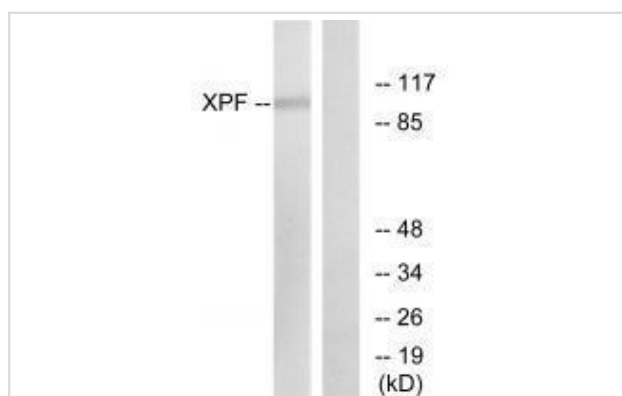
Description

Product Name	XPF Antibody
Host Species	Rabbit
Clonality	Polyclonal
Purification	The antibody was affinity-purified from rabbit antiserum by affinity-chromatography using epitope-specific immunogen.
Applications	WB
Species Reactivity	Hu
Specificity	The antibody detects endogenous levels of total XPF protein.
Immunogen Type	Peptide
Immunogen Description	Synthesized peptide derived from internal of human XPF.
Target Name	XPF
Other Names	DNA repair endonuclease XPF; EC 3.1.-.-; DNA excision repair protein ERCC-4; DNA-repair protein complementing XP-F cells; Xeroderma pigmentosum group F-complementing protein
Accession No.	Swiss-Prot: Q92889NCBI Gene ID: 2072
Uniprot	Q92889
GeneID	2072;
SDS-PAGE MW	103kd
Concentration	1.0mg/ml
Formulation	Rabbit IgG in phosphate buffered saline (without Mg ²⁺ and Ca ²⁺), pH 7.4, 150mM NaCl, 0.02% sodium azide and 50% glycerol.
Storage	Store at -20°C

Application Details

Western blotting: 1:500~1:3000

Images



Western blot analysis of extracts from 293 cells, using XPF antibody #33545.

Background

Catalytic component of a structure-specific DNA repair endonuclease responsible for the 5-prime incision during DNA repair. Involved in homologous recombination that assists in removing interstrand cross-link.

Brookman K.W., Mol. Cell. Biol. 16:6553-6562(1996).

Sijbers A.M., Cell 86:811-822(1996).

Cleaver J.E., Hum. Mutat. 14:9-22(1999).

Note: This product is for in vitro research use only