

CDC7 Antibody

Catalog No: #33558

Package Size: #33558-1 50ul #33558-2 100ul

Orders: order@signalwayantibody.comSupport: tech@signalwayantibody.com

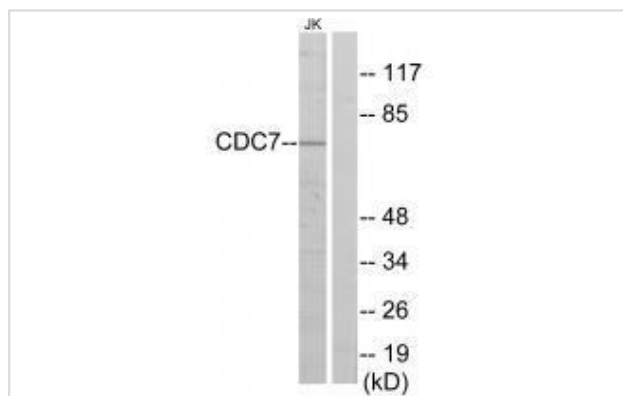
Description

Product Name	CDC7 Antibody
Host Species	Rabbit
Clonality	Polyclonal
Purification	The antibody was affinity-purified from rabbit antiserum by affinity-chromatography using epitope-specific immunogen.
Applications	WB
Species Reactivity	Hu
Specificity	The antibody detects endogenous levels of total CDC7 protein.
Immunogen Type	Peptide
Immunogen Description	Synthesized peptide derived from internal of human CDC7.
Target Name	CDC7
Other Names	Cell division cycle 7-related protein kinase; EC 2.7.11.1; CDC7-related kinase; HsCdc7; huCdc7
Accession No.	Swiss-Prot: O00311NCBI Gene ID: 8317
Uniprot	O00311
GeneID	8317;
SDS-PAGE MW	70kd
Concentration	1.0mg/ml
Formulation	Rabbit IgG in phosphate buffered saline (without Mg ²⁺ and Ca ²⁺), pH 7.4, 150mM NaCl, 0.02% sodium azide and 50% glycerol.
Storage	Store at -20°C

Application Details

Western blotting: 1:500~1:3000

Images



Western blot analysis of extracts from Jurkat cells, using CDC7 antibody #33558.

Background

Seems to phosphorylate critical substrates that regulate the G1/S phase transition and/or DNA replication. Can phosphorylates MCM2 and MCM3.

Sato N., EMBO J. 16:4340-4351(1997).

Hess G.F., Gene 211:133-140(1998).

Jiang W., Proc. Natl. Acad. Sci. U.S.A. 94:14320-14325(1997).

Note: This product is for in vitro research use only