

KNTC2 Antibody

Catalog No: #33568

Package Size: #33568-1 50ul #33568-2 100ul

Orders: order@signalwayantibody.comSupport: tech@signalwayantibody.com

Description

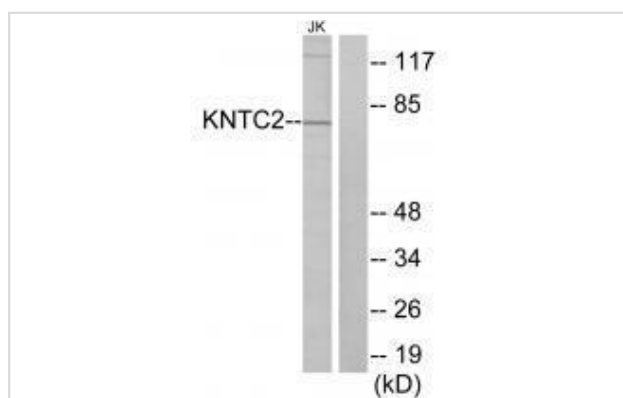
Product Name	KNTC2 Antibody
Host Species	Rabbit
Clonality	Polyclonal
Purification	The antibody was affinity-purified from rabbit antiserum by affinity-chromatography using epitope-specific immunogen.
Applications	WB IF
Species Reactivity	Hu Ms
Specificity	The antibody detects endogenous levels of total KNTC2 protein.
Immunogen Type	Peptide
Immunogen Description	Synthesized peptide derived from internal of human KNTC2.
Target Name	KNTC2
Other Names	HEC1; HEC; Highly expressed in cancer; rich in leucine heptad repeats; KNTC2
Accession No.	Swiss-Prot: O14777NCBI Gene ID: 10403
Uniprot	O14777
GeneID	10403;
SDS-PAGE MW	73kd
Concentration	1.0mg/ml
Formulation	Rabbit IgG in phosphate buffered saline (without Mg ²⁺ and Ca ²⁺), pH 7.4, 150mM NaCl, 0.02% sodium azide and 50% glycerol.
Storage	Store at -20°C

Application Details

Western blotting: 1:500~1:3000

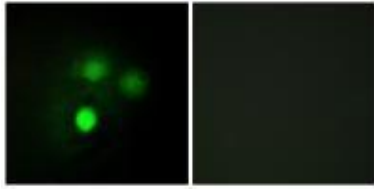
Immunofluorescence: 1:100~1:500

Images



Western blot analysis of extracts from Jurkat cells, using KNTC2 antibody #33568.

Immunofluorescence analysis of HUVEC cells, using KNTC2 antibody #33568.



Background

Acts as a component of the essential kinetochore-associated NDC80 complex, which is required for chromosome segregation and spindle checkpoint activity. Required for kinetochore integrity and the organization of stable microtubule binding sites in the outer plate of the kinetochore.

Chen Y., Mol. Cell. Biol. 17:6049-6056(1997).

The MGC Project Team, Genome Res. 14:2121-2127(2004).

Zheng L., Mol. Cell. Biol. 19:5417-5428(1999).

Note: This product is for in vitro research use only