

TrkB(Ab-705) Antibody

Catalog No: #21328

Package Size: #21328-1 50ul #21328-2 100ul

Orders: order@signalwayantibody.comSupport: tech@signalwayantibody.com

Description

Product Name	TrkB(Ab-705) Antibody
Host Species	Rabbit
Clonality	Polyclonal
Purification	Antibodies were produced by immunizing rabbits with synthetic peptide and KLH conjugates. Antibodies were purified by affinity-chromatography using epitope-specific peptide.
Applications	WB IF
Species Reactivity	Hu Ms Rt
Specificity	The antibody detects endogenous levels of total TrkB protein.
Immunogen Type	Peptide-KLH
Immunogen Description	Peptide sequence around aa.703~707 (T-D-Y -Y-R) derived from Human TrkB.
Target Name	TrkB
Other Names	TRKB; trk-B; GP145-TrkB
Accession No.	Swiss-Prot: Q16620NCBI Protein: NP_001007098.1
Uniprot	Q16620
GeneID	4915;
Concentration	1.0mg/ml
Formulation	Supplied at 1.0mg/mL in phosphate buffered saline (without Mg ²⁺ and Ca ²⁺), pH 7.4, 150mM NaCl, 0.02% sodium azide and 50% glycerol.
Storage	Store at -20°C for long term preservation (recommended). Store at 4°C for short term use.

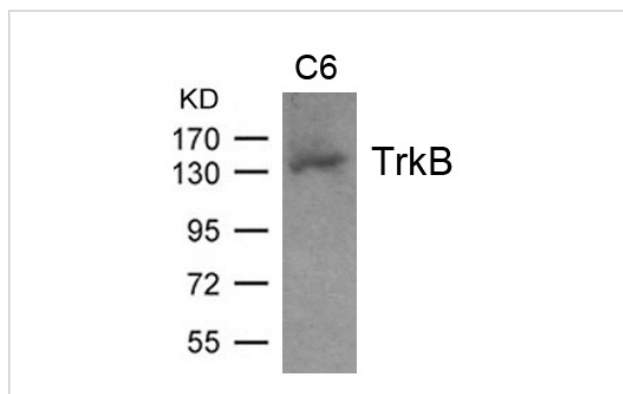
Application Details

Predicted MW: 145kd

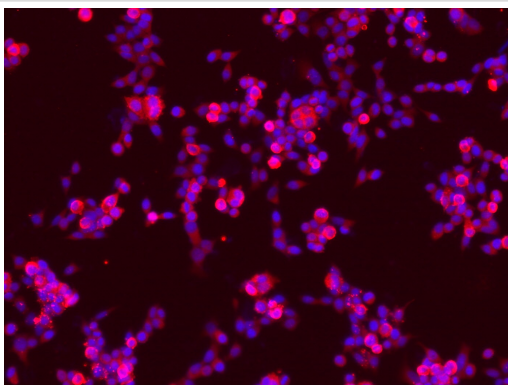
Western blotting: 1:500~1:1000

Immunofluorescence: 1:100~1:200

Images



Western blot analysis of extract from C6 cell and using TrkB(Ab-705) Antibody #21328.



Immunofluorescence staining of methanol-fixed NCI-h446 cells showing cytoplasmic staining using TrkB (Ab-705) Antibody #21328.

Background

Receptor for brain-derived neurotrophic factor (BDNF), neurotrophin-3 and neurotrophin-4/5 but not nerve growth factor (NGF). Involved in the development and/or maintenance of the nervous system. This is a tyrosine-protein kinase receptor. Known substrates for the TRK receptors are SHC1, PI-3 kinase, and PLC-gamma-1.

Woronowicz A, et al. Glycobiology. 2007 Jan;17(1):10-24. Mojsilovic-Petrovic J, et al. J Neurosci. 2006 Sep 6;26(36):9250-63. Lewis MA, et al. Mol Pharmacol. 2006 Apr;69(4):1396-404. Cai D, et al. Physiol Genomics. 2006 Feb 14;24(3):191-7.

Note: This product is for in vitro research use only