

LAT3 Antibody

Catalog No: #33609

Package Size: #33609-1 50ul #33609-2 100ul

Orders: order@signalwayantibody.comSupport: tech@signalwayantibody.com

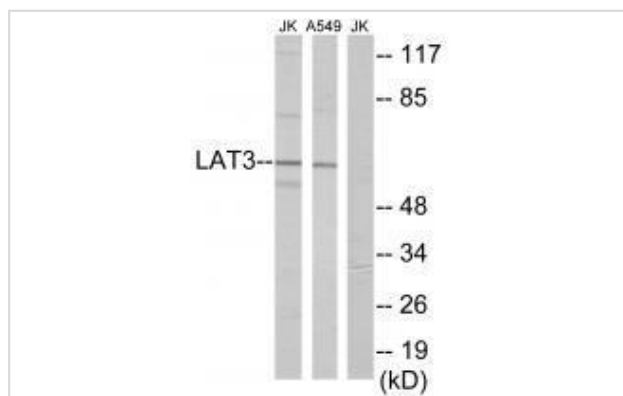
Description

Product Name	LAT3 Antibody
Host Species	Rabbit
Clonality	Polyclonal
Purification	The antibody was affinity-purified from rabbit antiserum by affinity-chromatography using epitope-specific immunogen.
Applications	WB
Species Reactivity	Hu
Specificity	The antibody detects endogenous levels of total LAT3 protein.
Immunogen Type	Peptide
Immunogen Description	Synthesized peptide derived from internal of human LAT3.
Target Name	LAT3
Other Names	L-type amino acid transporter 3; LAT3; large neutral amino acids transporter small subunit 3; prostate cancer overexpressed gene 1 protein; solute carrier family 43 member 1
Accession No.	Swiss-Prot: O75387NCBI Gene ID: 8501
Uniprot	O75387
GeneID	8501;
SDS-PAGE MW	61kd
Concentration	1.0mg/ml
Formulation	Rabbit IgG in phosphate buffered saline (without Mg ²⁺ and Ca ²⁺), pH 7.4, 150mM NaCl, 0.02% sodium azide and 50% glycerol.
Storage	Store at -20°C

Application Details

Western blotting: 1:500~1:3000

Images



Western blot analysis of extracts from Jurkat cells and A549 cells, using LAT3 antibody #33609.

Background

Sodium-independent, high affinity transport of large neutral amino acids. Has narrower substrate selectivity compared to SLC7A5 and SLC7A8 and mainly transports branched-chain amino acids and phenylalanine. Plays a role in the development of human prostate cancer, from prostatic intraepithelial neoplasia to invasive prostate cancer.

Cole K.A., Genomics 51:282-287(1998).

Babu E., J. Biol. Chem. 278:43838-43845(2003).

Chuaqui R.F., Urology 50:302-307(1997).

Note: This product is for in vitro research use only