

ADA2L Antibody

Catalog No: #33614

Package Size: #33614-1 50ul #33614-2 100ul

Orders: order@signalwayantibody.comSupport: tech@signalwayantibody.com

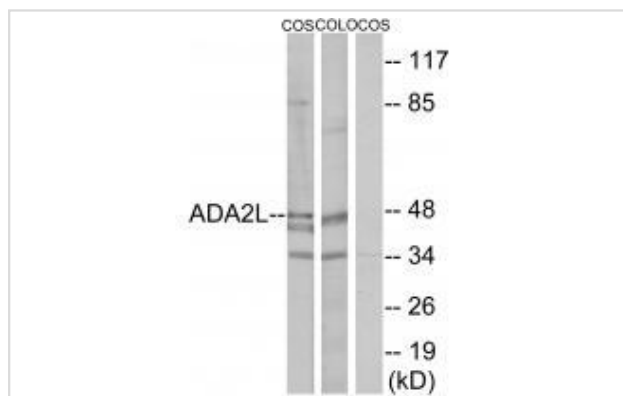
Description

Product Name	ADA2L Antibody
Host Species	Rabbit
Clonality	Polyclonal
Purification	The antibody was affinity-purified from rabbit antiserum by affinity-chromatography using epitope-specific immunogen.
Applications	WB
Species Reactivity	Hu Ms Rt
Specificity	The antibody detects endogenous levels of total ADA2L protein.
Immunogen Type	Peptide
Immunogen Description	Synthesized peptide derived from internal of human ADA2L.
Target Name	ADA2L
Other Names	Transcriptional adapter 2-like; ADA2-like protein; TADA2L; KL04P;
Accession No.	Swiss-Prot: O75478NCBI Gene ID: 6871
Uniprot	O75478
GeneID	6871;
SDS-PAGE MW	47kd
Concentration	1.0mg/ml
Formulation	Rabbit IgG in phosphate buffered saline (without Mg ²⁺ and Ca ²⁺), pH 7.4, 150mM NaCl, 0.02% sodium azide and 50% glycerol.
Storage	Store at -20°C

Application Details

Western blotting: 1:500~1:3000

Images



Western blot analysis of extracts from COS-7 cells and COLO205 cells, using ADA2L antibody #33614.

Background

Component of the ATAC complex, a complex with histone acetyltransferase activity on histones H3 and H4. Required for the function of some acidic activation domains, which activate transcription from a distant site By similarity. Binds double-stranded DNA. Binds dinucleosomes, probably at the linker region between neighboring nucleosomes. Plays a role in chromatin remodeling.

Candau R., Mol. Cell. Biol. 16:593-602(1996).

Ogryzko V.V., Cell 94:35-44(1998).

Henriksson A., Mol. Cell. Biol. 17:3065-3073(1997).

Note: This product is for in vitro research use only