

## ALX3 Antibody

Catalog No: #33625

Package Size: #33625-1 50ul #33625-2 100ul

Orders: [order@signalwayantibody.com](mailto:order@signalwayantibody.com)Support: [tech@signalwayantibody.com](mailto:tech@signalwayantibody.com)

## Description

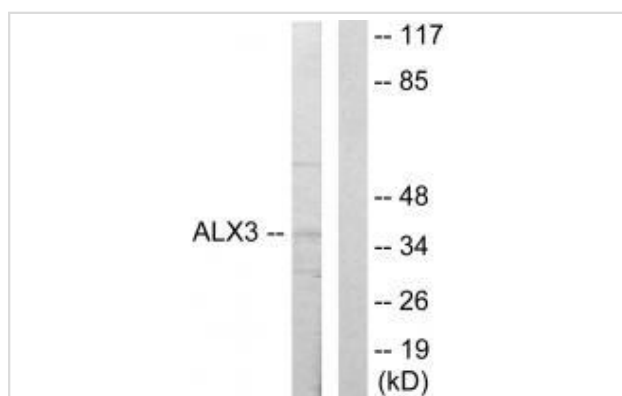
Product Name	ALX3 Antibody
Host Species	Rabbit
Clonality	Polyclonal
Purification	The antibody was affinity-purified from rabbit antiserum by affinity-chromatography using epitope-specific immunogen.
Applications	WB IF
Species Reactivity	Hu Ms Rt
Specificity	The antibody detects endogenous levels of total ALX3 protein.
Immunogen Type	Peptide
Immunogen Description	Synthesized peptide derived from internal of human ALX3.
Target Name	ALX3
Other Names	Homeobox protein aristaless-like 3; Proline-rich transcription factor ALX3; ALX3;
Accession No.	Swiss-Prot: O95076NCBI Gene ID: 257
Uniprot	O95076
GeneID	257;
SDS-PAGE MW	36kd
Concentration	1.0mg/ml
Formulation	Rabbit IgG in phosphate buffered saline (without Mg <sup>2+</sup> and Ca <sup>2+</sup> ), pH 7.4, 150mM NaCl, 0.02% sodium azide and 50% glycerol.
Storage	Store at -20°C

## Application Details

Western blotting: 1:500~1:3000

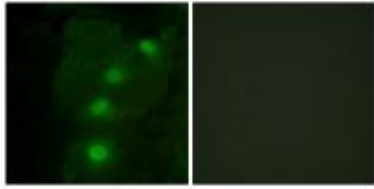
Immunofluorescence: 1:100~1:500

## Images



Western blot analysis of extracts from 293 cells, using ALX3 antibody #33625.

Immunofluorescence analysis of HeLa cells, using ALX3 antibody #33625.



## Background

Transcriptional regulator with a possible role in patterning of mesoderm during development By similarity.

Wimmer K., Genes Chromosomes Cancer 33:285-294(2002).

Note: This product is for in vitro research use only