

## CBX6 Antibody

Catalog No: #33635

Package Size: #33635-1 50ul #33635-2 100ul

Orders: [order@signalwayantibody.com](mailto:order@signalwayantibody.com)Support: [tech@signalwayantibody.com](mailto:tech@signalwayantibody.com)

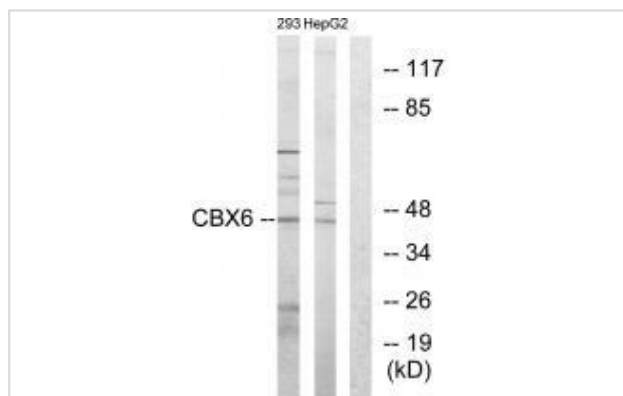
## Description

Product Name	CBX6 Antibody
Host Species	Rabbit
Clonality	Polyclonal
Purification	The antibody was affinity-purified from rabbit antiserum by affinity-chromatography using epitope-specific immunogen.
Applications	WB
Species Reactivity	Hu Ms Rt
Specificity	The antibody detects endogenous levels of total CBX6 protein.
Immunogen Type	Peptide
Immunogen Description	Synthesized peptide derived from internal of human CBX6.
Target Name	CBX6
Other Names	Chromobox protein homolog 6; CBX6;
Accession No.	Swiss-Prot: O95503NCBI Gene ID: 23466
Uniprot	O95503
GeneID	23466;
SDS-PAGE MW	44kd
Concentration	1.0mg/ml
Formulation	Rabbit IgG in phosphate buffered saline (without Mg <sup>2+</sup> and Ca <sup>2+</sup> ), pH 7.4, 150mM NaCl, 0.02% sodium azide and 50% glycerol.
Storage	Store at -20°C

## Application Details

Western blotting: 1:500~1:3000

## Images



Western blot analysis of extracts from 293 cells and HepG2 cells, using CBX6 antibody #33635.

## Background

Component of a Polycomb group (PcG) multiprotein PRC1-like complex, a complex class required to maintain the transcriptionally repressive state of many genes, including Hox genes, throughout development. PcG PRC1 complex acts via chromatin remodeling and modification of histones; it mediates monoubiquitination of histone H2A 'Lys-119', rendering chromatin heritably changed in its expressibility.

Dunham I., Nature 402:489-495(1999).

The MGC Project Team, Genome Res. 14:2121-2127(2004).

---

Note: This product is for in vitro research use only