

Histone 1F0 Antibody

Catalog No: #33655

Package Size: #33655-1 50ul #33655-2 100ul

Orders: order@signalwayantibody.comSupport: tech@signalwayantibody.com

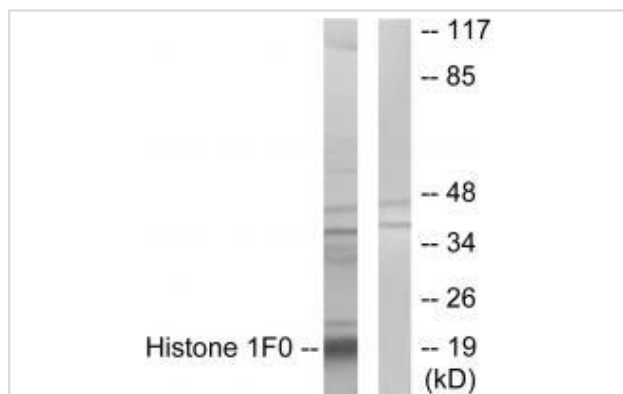
Description

Product Name	Histone 1F0 Antibody
Host Species	Rabbit
Clonality	Polyclonal
Purification	The antibody was affinity-purified from rabbit antiserum by affinity-chromatography using epitope-specific immunogen.
Applications	WB
Species Reactivity	Hu
Specificity	The antibody detects endogenous levels of total Histone 1F0 protein.
Immunogen Type	Peptide
Immunogen Description	Synthesized peptide derived from internal of human Histone 1F0.
Target Name	Histone 1F0
Other Names	H1; H1 histone family; member 0; H10; H1FV
Accession No.	Swiss-Prot: P07305NCBI Gene ID: 3005
Uniprot	P07305
GeneID	3005;
SDS-PAGE MW	20kd
Concentration	1.0mg/ml
Formulation	Rabbit IgG in phosphate buffered saline (without Mg ²⁺ and Ca ²⁺), pH 7.4, 150mM NaCl, 0.02% sodium azide and 50% glycerol.
Storage	Store at -20°C

Application Details

Western blotting: 1:500~1:3000

Images



Western blot analysis of extracts from A549 cells, using Histone 1F0 antibody #33655.

Background

Histones H1 are necessary for the condensation of nucleosome chains into higher-order structures. The H1F0 histones are found in cells that are in terminal stages of differentiation or that have low rates of cell division.

Doenecke D., J. Mol. Biol. 187:461-464(1986).

Collins J.E., Genome Biol. 5:RESEARCH84.1-RESEARCH84.11(2004).

Dunham I., Nature 402:489-495(1999).

Note: This product is for in vitro research use only