

NR2F6 Antibody

Catalog No: #33668

Package Size: #33668-1 50ul #33668-2 100ul

Orders: order@signalwayantibody.comSupport: tech@signalwayantibody.com

Description

Product Name	NR2F6 Antibody
Host Species	Rabbit
Clonality	Polyclonal
Purification	The antibody was affinity-purified from rabbit antiserum by affinity-chromatography using epitope-specific immunogen.
Applications	WB IHC IF
Species Reactivity	Hu Ms Rt
Specificity	The antibody detects endogenous levels of total NR2F6 protein.
Immunogen Type	Peptide
Immunogen Description	Synthesized peptide derived from N-terminal of human NR2F6.
Target Name	NR2F6
Other Names	EAR2; ERBAL2; NR2F6; Orphan nuclear receptor EAR-2; V-erbA related protein EAR-2
Accession No.	Swiss-Prot: P10588NCBI Gene ID: 2063
Uniprot	P10588
GeneID	2063;
SDS-PAGE MW	42kd
Concentration	1.0mg/ml
Formulation	Rabbit IgG in phosphate buffered saline (without Mg ²⁺ and Ca ²⁺), pH 7.4, 150mM NaCl, 0.02% sodium azide and 50% glycerol.
Storage	Store at -20°C

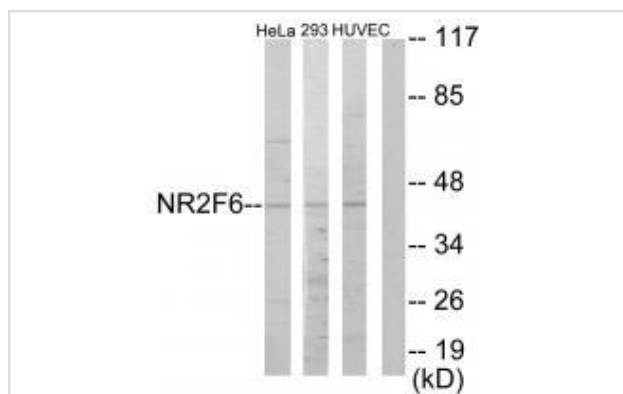
Application Details

Western blotting: 1:500~1:3000

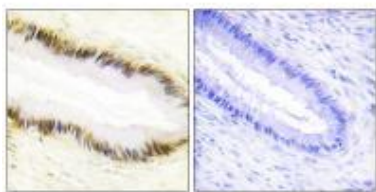
Immunohistochemistry: 1:50~1:100

Immunofluorescence: 1:100~1:500

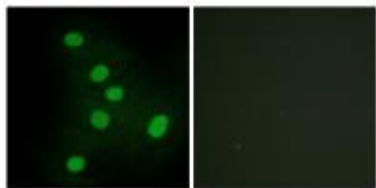
Images



Western blot analysis of extracts from HeLa cells, 293 cells and HUVEC cells, using NR2F6 antibody #33668.



Immunohistochemistry analysis of paraffin-embedded human cervix carcinoma tissue using NR2F6 antibody #33668.



Immunofluorescence analysis of HepG2 cells, using NR2F6 antibody #33668.

Background

Transcription factor predominantly involved in transcriptional repression. Binds to promoter/enhancer response elements that contain the imperfect 5'-AGGTCA-3' direct or inverted repeats with various spacings which are also recognized by other nuclear hormone receptors. Involved in modulation of hormonal responses. Represses transcriptional activity of the lutropin-choriogonadotropic hormone receptor/LHCGR gene, the renin/REN gene and the oxytocin-neurophysin/OXT gene. Represses the triiodothyronine-dependent and -independent transcriptional activity of the thyroid hormone receptor gene in a cell type-specific manner. The corepressing function towards thyroid hormone receptor beta/THRB involves at least in part the inhibition of THRB binding to triiodothyronine response elements (TREs) by NR2F6. Inhibits NFATC transcription factor DNA binding and subsequently its transcriptional activity. Acts as transcriptional repressor of IL-17 expression in Th-17 differentiated CD4+ T cells and may be involved in induction and/or maintenance of peripheral immunological tolerance and autoimmunity. Involved in development of forebrain circadian clock; is required early in the development of the locus coeruleus (LC).

Miyajima N., Nucleic Acids Res. 16:11057-11074(1988).

The MGC Project Team, Genome Res. 14:2121-2127(2004).

Beausoleil S.A., Proc. Natl. Acad. Sci. U.S.A. 101:12130-12135(2004).

Note: This product is for in vitro research use only