

## SKIL Antibody

Catalog No: #33674

Package Size: #33674-1 50ul #33674-2 100ul

Orders: [order@signalwayantibody.com](mailto:order@signalwayantibody.com)Support: [tech@signalwayantibody.com](mailto:tech@signalwayantibody.com)

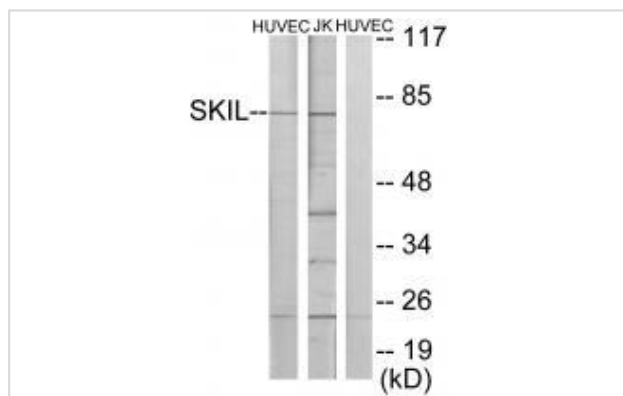
## Description

Product Name	SKIL Antibody
Host Species	Rabbit
Clonality	Polyclonal
Purification	The antibody was affinity-purified from rabbit antiserum by affinity-chromatography using epitope-specific immunogen.
Applications	WB
Species Reactivity	Hu Ms
Specificity	The antibody detects endogenous levels of total SKIL protein.
Immunogen Type	Peptide
Immunogen Description	Synthesized peptide derived from C-terminal of human SKIL.
Target Name	SKIL
Other Names	Ski-like protein; Ski-related protein; Ski-related oncogene; SKIL; SNO
Accession No.	Swiss-Prot: P12757NCBI Gene ID: 6498
Uniprot	P12757
GeneID	6498;
SDS-PAGE MW	77kd
Concentration	1.0mg/ml
Formulation	Rabbit IgG in phosphate buffered saline (without Mg <sup>2+</sup> and Ca <sup>2+</sup> ), pH 7.4, 150mM NaCl, 0.02% sodium azide and 50% glycerol.
Storage	Store at -20°C

## Application Details

Western blotting: 1:500~1:3000

## Images



Western blot analysis of extracts from HUVEC cells and Jurkat cells, using SKIL antibody #33674.

## Background

---

May have regulatory role in cell division or differentiation in response to extracellular signals.

Nomura N., Nucleic Acids Res. 17:5489-5500(1989).

Pearson-White S.H., Nucleic Acids Res. 25:2930-2937(1997).

Pearson-White S., Nucleic Acids Res. 21:4632-4638(1993).

---

Note: This product is for in vitro research use only