

## IRF2 Antibody

Catalog No: #33680

Package Size: #33680-1 50ul #33680-2 100ul

Orders: [order@signalwayantibody.com](mailto:order@signalwayantibody.com)Support: [tech@signalwayantibody.com](mailto:tech@signalwayantibody.com)

## Description

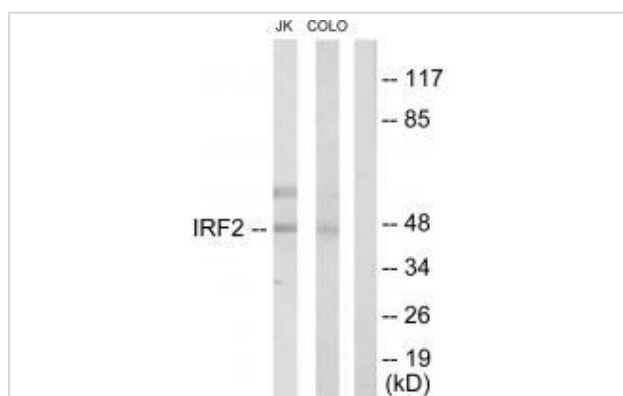
Product Name	IRF2 Antibody
Host Species	Rabbit
Clonality	Polyclonal
Purification	The antibody was affinity-purified from rabbit antiserum by affinity-chromatography using epitope-specific immunogen.
Applications	WB IHC
Species Reactivity	Hu Ms Rt
Specificity	The antibody detects endogenous levels of total IRF2 protein.
Immunogen Type	Peptide
Immunogen Description	Synthesized peptide derived from internal of human IRF2.
Target Name	IRF2
Other Names	IRF2; Interferon regulatory factor 2;
Accession No.	Swiss-Prot: P14316NCBI Gene ID: 3660
Uniprot	P14316
GeneID	3660;
SDS-PAGE MW	47kd
Concentration	1.0mg/ml
Formulation	Rabbit IgG in phosphate buffered saline (without Mg <sup>2+</sup> and Ca <sup>2+</sup> ), pH 7.4, 150mM NaCl, 0.02% sodium azide and 50% glycerol.
Storage	Store at -20°C

## Application Details

Western blotting: 1:500~1:3000

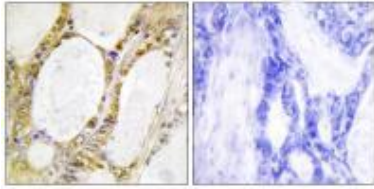
Immunohistochemistry: 1:50~1:100

## Images



Western blot analysis of extracts from Jurkat cells and COLO205 cells, using IRF2 antibody #33680.

Immunohistochemistry analysis of paraffin-embedded human colon carcinoma tissue using IRF2 antibody #33680.



## Background

Specifically binds to the upstream regulatory region of type I IFN and IFN-inducible MHC class I genes (the interferon consensus sequence (ICS)) and represses those genes. Also acts as an activator for several genes including H4 and IL7. Constitutively binds to the ISRE promoter to activate IL7. Involved in cell cycle regulation through binding the site II (HINF-M) promoter region of H4 and activating transcription during cell growth. Antagonizes IRF1 transcriptional activation.

Itoh S., Nucleic Acids Res. 17:8372-8372(1989).

Cha Y., J. Biol. Chem. 269:5279-5287(1994).

Staal A., J. Cell. Physiol. 185:269-279(2000).

Note: This product is for in vitro research use only