

ATF3 Antibody

Catalog No: #33704

Package Size: #33704-1 50ul #33704-2 100ul

Orders: order@signalwayantibody.comSupport: tech@signalwayantibody.com

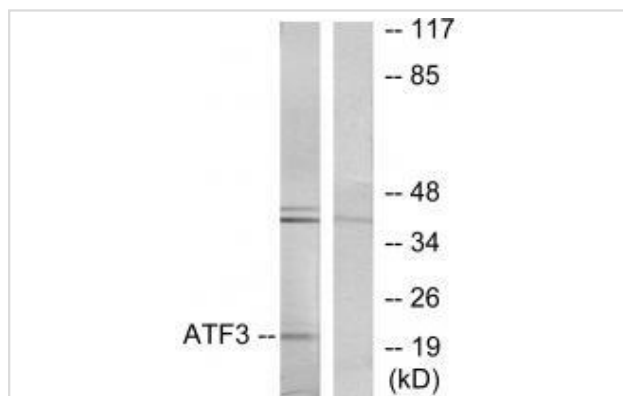
Description

Product Name	ATF3 Antibody
Host Species	Rabbit
Clonality	Polyclonal
Purification	The antibody was affinity-purified from rabbit antiserum by affinity-chromatography using epitope-specific immunogen.
Applications	WB
Species Reactivity	Hu Ms Rt
Specificity	The antibody detects endogenous levels of total ATF3 protein.
Immunogen Type	Peptide
Immunogen Description	Synthesized peptide derived from internal of human ATF3.
Target Name	ATF3
Other Names	Cyclic AMP-dependent transcription factor ATF-3; Activating transcription factor 3; ATF3;
Accession No.	Swiss-Prot: P18847NCBI Gene ID: 467
Uniprot	P18847
GeneID	467;
SDS-PAGE MW	21kd
Concentration	1.0mg/ml
Formulation	Rabbit IgG in phosphate buffered saline (without Mg ²⁺ and Ca ²⁺), pH 7.4, 150mM NaCl, 0.02% sodium azide and 50% glycerol.
Storage	Store at -20°C

Application Details

Western blotting: 1:500~1:3000

Images



Western blot analysis of extracts from RAW264.7 cells, using ATF3 antibody #33704.

Background

This protein binds the cAMP response element (CRE) (consensus: 5'-GTGACGT[AC][AG]-3'), a sequence present in many viral and cellular promoters. Represses transcription from promoters with ATF sites. It may repress transcription by stabilizing the binding of inhibitory cofactors at the promoter. Isoform 2 activates transcription presumably by sequestering inhibitory cofactors away from the promoters.

Chen B.P.C., J. Biol. Chem. 269:15819-15826(1994).

Hai T., Genes Dev. 3:2083-2090(1989).

Hillman R.T., Genome Biol. 5:RESEARCH008.1-RESEARCH008.16(2004).

Note: This product is for in vitro research use only