

HXK1 Antibody

Catalog No: #33706

Package Size: #33706-1 50ul #33706-2 100ul

Orders: order@signalwayantibody.comSupport: tech@signalwayantibody.com

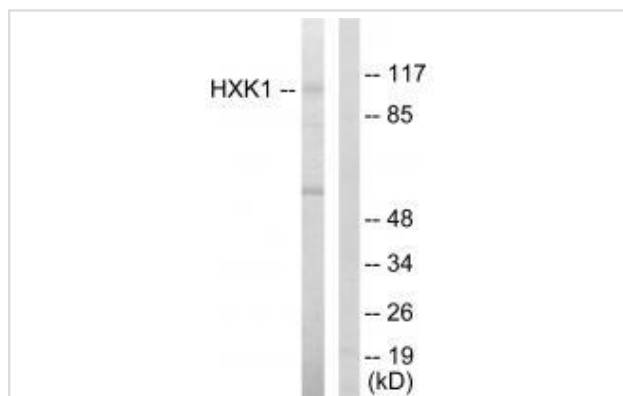
Description

Product Name	HXK1 Antibody
Host Species	Rabbit
Clonality	Polyclonal
Purification	The antibody was affinity-purified from rabbit antiserum by affinity-chromatography using epitope-specific immunogen.
Applications	WB
Species Reactivity	Hu Ms Rt
Specificity	The antibody detects endogenous levels of total HXK1 protein.
Immunogen Type	Peptide
Immunogen Description	Synthesized peptide derived from internal of human HXK1.
Target Name	HXK1
Other Names	Hexokinase-1; EC 2.7.1.1; Hexokinase type I; HK I; Brain form hexokinase
Accession No.	Swiss-Prot: P19367NCBI Gene ID: 3098
Uniprot	P19367
GeneID	3098;
SDS-PAGE MW	109kd
Concentration	1.0mg/ml
Formulation	Rabbit IgG in phosphate buffered saline (without Mg ²⁺ and Ca ²⁺), pH 7.4, 150mM NaCl, 0.02% sodium azide and 50% glycerol.
Storage	Store at -20°C

Application Details

Western blotting: 1:500~1:3000

Images



Western blot analysis of extracts from HeLa cells, using HXK1 antibody #33706.

Background

Hexokinases phosphorylate glucose to produce glucose-6-phosphate, the first step in most glucose metabolism pathways. This gene encodes a ubiquitous form of hexokinase which localizes to the outer membrane of mitochondria. Mutations in this gene have been associated with hemolytic anemia due to hexokinase deficiency. Alternative splicing of this gene results in five transcript variants which encode different isoforms, some of which are tissue-specific. Each isoform has a distinct N-terminus; the remainder of the protein is identical among all the isoforms. A sixth transcript variant has been described, but due to the presence of several stop codons, it is not thought to encode a protein.

Nishi S., *Biochem. Biophys. Res. Commun.* 157:937-943(1988).

Ruzzo A., *Biochem. J.* 331:607-613(1998).

Deloukas P., *Nature* 429:375-381(2004).

Note: This product is for in vitro research use only