

CD2L1Antibody

Catalog No: #33712



Package Size: #33712-1 50ul #33712-2 100ul

Orders: order@signalwayantibody.com
Support: tech@signalwayantibody.com

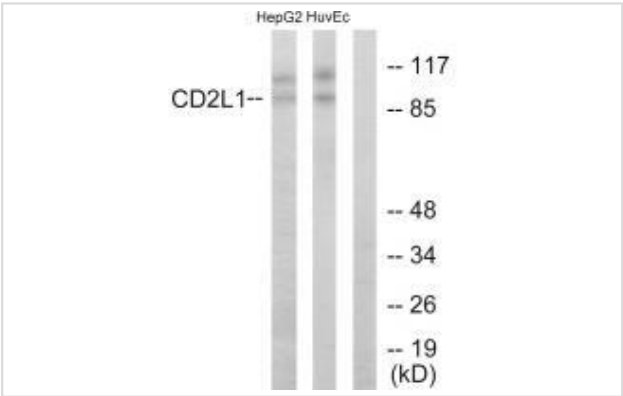
Description

Product Name	CD2L1Antibody
Host Species	Rabbit
Clonality	Polyclonal
Purification	The antibody was affinity-purified from rabbit antiserum by affinity-chromatography using epitope-specific immunogen.
Applications	WB
Species Reactivity	Hu Ms
Specificity	The antibody detects endogenous levels of total CD2L1 protein.
Immunogen Type	Peptide
Immunogen Description	Synthesized peptide derived from N-terminal of human CD2L1.
Target Name	CD2L1
Other Names	CD2L1; CDC2L1; CDK11; CLK-1; Cell division cycle 2-like 1
Accession No.	Swiss-Prot: P21127NCBI Gene ID: 984
Uniprot	P21127
GeneID	984;
SDS-PAGE MW	92kd
Concentration	1.0mg/ml
Formulation	Rabbit IgG in phosphate buffered saline (without Mg2+ and Ca2+), pH 7.4, 150mM NaCl, 0.02% sodium azide and 50% glycerol.
Storage	Store at -20°C

Application Details

Western blotting: 1:500~1:3000

Images



Western blot analysis of extracts from HepG2 cells and HUVEC cells, using CD2L1 antibody #33712.

Background

Appears to play multiple roles in cell cycle progression, cytokinesis and apoptosis. The p110 isoforms have been suggested to be involved in pre-mRNA splicing, potentially by phosphorylating the splicing protein SFRS7. The p58 isoform may act as a negative regulator of normal cell cycle progression.

Bunnell B.A., Proc. Natl. Acad. Sci. U.S.A. 87:7467-7471(1990).

Eipers P.G., Genomics 13:613-621(1992).

Xiang J., J. Biol. Chem. 269:15786-15794(1994).

Note: This product is for in vitro research use only