

MARK3 Antibody

Catalog No: #33730

Package Size: #33730-1 50ul #33730-2 100ul

Orders: order@signalwayantibody.comSupport: tech@signalwayantibody.com

Description

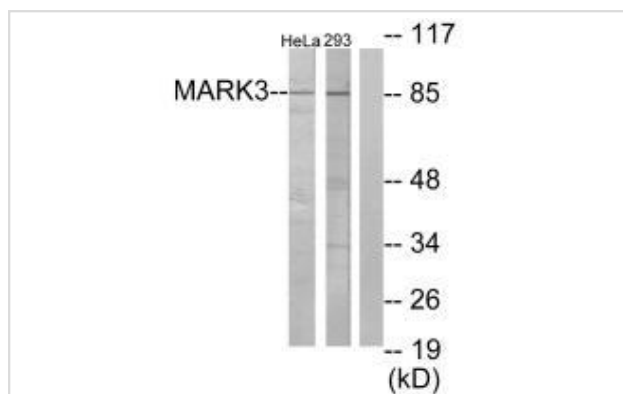
Product Name	MARK3 Antibody
Host Species	Rabbit
Clonality	Polyclonal
Purification	The antibody was affinity-purified from rabbit antiserum by affinity-chromatography using epitope-specific immunogen.
Applications	WB IHC
Species Reactivity	Hu Ms Rt
Specificity	The antibody detects endogenous levels of total MARK3 protein.
Immunogen Type	Peptide
Immunogen Description	Synthesized peptide derived from N-terminal of human MARK3.
Target Name	MARK3
Other Names	C-TAK1; Cdc25C- associated protein kinase 1; EC 2.7.11.1; MAP/microtubule affinity-regulating kinase 3; Protein kinase STK10
Accession No.	Swiss-Prot: P27448NCBI Gene ID: 4140
Uniprot	P27448
GeneID	4140;
SDS-PAGE MW	85kd
Concentration	1.0mg/ml
Formulation	Rabbit IgG in phosphate buffered saline (without Mg ²⁺ and Ca ²⁺), pH 7.4, 150mM NaCl, 0.02% sodium azide and 50% glycerol.
Storage	Store at -20°C

Application Details

Western blotting: 1:500~1:3000

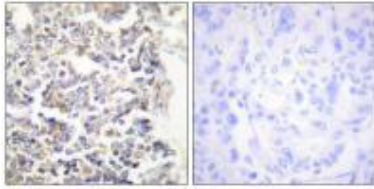
Immunohistochemistry: 1:50~1:100

Images



Western blot analysis of extracts from HeLa cells and 293 cells, using MARK3 antibody #33730.

Immunohistochemistry analysis of paraffin-embedded human lung carcinoma tissue using MARK3 antibody #33730.



Background

Involved in the specific phosphorylation of microtubule-associated proteins for tau, MAP2 and MAP4. Phosphorylates CDC25C on 'Ser-216'. Regulates localization and activity of some histone deacetylases by mediating phosphorylation of HDAC7, promoting subsequent interaction between HDAC7 and 14-3-3 and export from the nucleus.

Peng C.Y., Cell Growth Differ. 9:197-208(1998).

Sun T.-Q., Nat. Cell Biol. 3:628-636(2001).

Wissing J., Mol. Cell. Proteomics 6:537-547(2007)

Note: This product is for in vitro research use only