

LTK Antibody

Catalog No: #33742

Package Size: #33742-1 50ul #33742-2 100ul

Orders: order@signalwayantibody.comSupport: tech@signalwayantibody.com

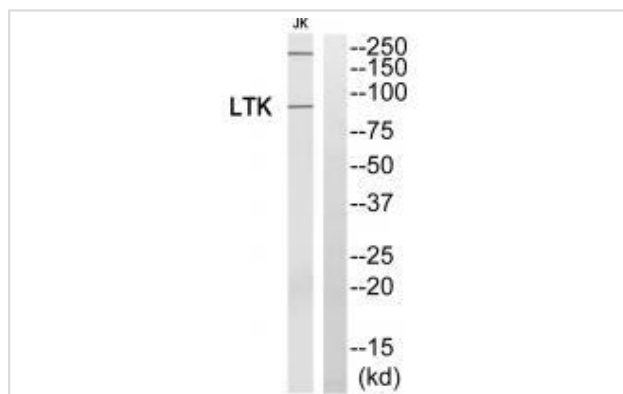
Description

Product Name	LTK Antibody
Host Species	Rabbit
Clonality	Polyclonal
Purification	The antibody was affinity-purified from rabbit antiserum by affinity-chromatography using epitope-specific immunogen.
Applications	WB
Species Reactivity	Hu Ms
Specificity	The antibody detects endogenous levels of total LTK protein.
Immunogen Type	Peptide
Immunogen Description	Synthesized peptide derived from internal of human LTK.
Target Name	LTK
Other Names	EC 2.7.1.112; EC 2.7.10.1; Leukocyte tyrosine kinase receptor precursor; Protein tyrosine kinase-1; TYK1
Accession No.	Swiss-Prot: P29376NCBI Gene ID: 4058
Uniprot	P29376
GeneID	4058;
SDS-PAGE MW	92kd
Concentration	1.0mg/ml
Formulation	Rabbit IgG in phosphate buffered saline (without Mg ²⁺ and Ca ²⁺), pH 7.4, 150mM NaCl, 0.02% sodium azide and 50% glycerol.
Storage	Store at -20°C

Application Details

Western blotting: 1:500~1:3000

Images



Western blot analysis of extracts from Jurkat cells, using LTK antibody #33742.

Background

Orphan receptor with a tyrosine-protein kinase activity. The exact function of this protein is not known. Studies with chimeric proteins (replacing its extracellular region with that of several known growth factor receptors, such as EGFR and CSFIR) demonstrate its ability to promote growth and specifically neurite outgrowth, and cell survival. Signaling appears to involve the PI3 kinase pathway. Involved in regulation of the secretory pathway involving endoplasmic reticulum (ER) export sites (ERESs) and ER to Golgi transport.

Toyoshima H., Proc. Natl. Acad. Sci. U.S.A. 90:5404-5408(1993).

Krolewski J.J., EMBO J. 10:2911-2919(1991).

Maru Y., Oncogene Res. 5:199-204(1990).

Note: This product is for in vitro research use only