

T4S1 Antibody

Catalog No: #33745

Package Size: #33745-1 50ul #33745-2 100ul

Orders: order@signalwayantibody.comSupport: tech@signalwayantibody.com

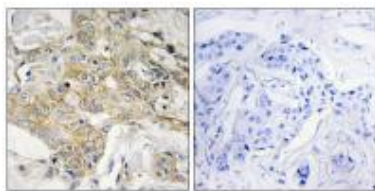
Description

Product Name	T4S1 Antibody
Host Species	Rabbit
Clonality	Polyclonal
Purification	The antibody was affinity-purified from rabbit antiserum by affinity-chromatography using epitope-specific immunogen.
Applications	IHC
Species Reactivity	Hu Ms
Specificity	The antibody detects endogenous levels of total T4S1 protein.
Immunogen Type	Peptide
Immunogen Description	Synthesized peptide derived from internal of human T4S1.
Target Name	T4S1
Other Names	Transmembrane 4 L6 family member 1; Tumor-associated antigen L6; Membrane component surface marker 1; M3S1; TM4SF1
Accession No.	Swiss-Prot: P30408NCBI Gene ID: 4071
Uniprot	P30408
GeneID	4071;
SDS-PAGE MW	22kd
Concentration	1.0mg/ml
Formulation	Rabbit IgG in phosphate buffered saline (without Mg2+ and Ca2+), pH 7.4, 150mM NaCl, 0.02% sodium azide and 50% glycerol.
Storage	Store at -20°C

Application Details

Immunohistochemistry: 1:50~1:100

Images



Immunohistochemistry analysis of paraffin-embedded human breast carcinoma tissue, using T4S1 antibody #33745.

Background

The protein encoded by this gene is a member of the transmembrane 4 superfamily, also known as the tetraspanin family. Most of these members are cell-surface proteins that are characterized by the presence of four hydrophobic domains. The proteins mediate signal transduction events that play a role in the regulation of cell development, activation, growth and motility. This encoded protein is a cell surface antigen and is highly expressed in different carcinomas.

Marken J.S., Proc. Natl. Acad. Sci. U.S.A. 89:3503-3507(1992).

The MGC Project Team, Genome Res. 14:2121-2127(2004).

Marken J.S., J. Biol. Chem. 269:7397-7401(1994).

Note: This product is for in vitro research use only