

## PRLR Antibody

Catalog No: #21457

Package Size: #21457-1 50ul #21457-2 100ul

Orders: [order@signalwayantibody.com](mailto:order@signalwayantibody.com)Support: [tech@signalwayantibody.com](mailto:tech@signalwayantibody.com)

## Description

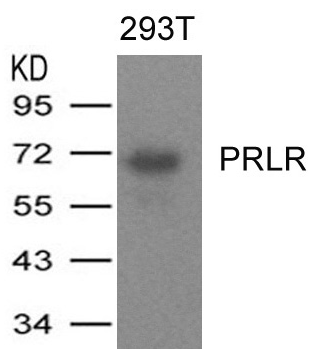
Product Name	PRLR Antibody
Host Species	Rabbit
Clonality	Polyclonal
Purification	Antibodies were produced by immunizing rabbits with synthetic peptide and KLH conjugates. Antibodies were purified by affinity-chromatography using epitope-specific peptide.
Applications	WB
Species Reactivity	Hu
Specificity	The antibody detects endogenous levels of total PRLR protein.
Immunogen Type	Peptide-KLH
Immunogen Description	Peptide sequence around aa.25~29 (Q-L-P-P-G) derived from Human PRLR
Target Name	PRLR
Other Names	hPRLrI
Accession No.	Swiss-Prot: P16471NCBI Protein: NP_000940.1
Uniprot	P16471
GeneID	5618;
Concentration	1.0mg/ml
Formulation	Supplied at 1.0mg/mL in phosphate buffered saline (without Mg <sup>2+</sup> and Ca <sup>2+</sup> ), pH 7.4, 150mM NaCl, 0.02% sodium azide and 50% glycerol.
Storage	Store at -20°C for long term preservation (recommended). Store at 4°C for short term use.

## Application Details

Predicted MW: 70kd

Western blotting: 1:500~1:1000

## Images



Western blot analysis of extracts from 293T cells expressing human PRLR protein using PRLR Antibody #21457.

## Background

---

This is a receptor for the anterior pituitary hormone prolactin (PRL). Isoform 4 is unable to transduce prolactin signaling. Isoform 6 is unable to transduce prolactin signaling

Boutin J.M,et al.Mol. Endocrinol. 3:1455-1461(1989)

Kline J.B,et al.J. Biol. Chem. 274:35461-35468(1999)

Hu Z.Z,et al.J. Clin. Endocrinol. Metab. 84:1153-1156(1999)

---

Note: This product is for in vitro research use only