

## CORO1A Antibody

Catalog No: #33746

Package Size: #33746-1 50ul #33746-2 100ul

Orders: [order@signalwayantibody.com](mailto:order@signalwayantibody.com)Support: [tech@signalwayantibody.com](mailto:tech@signalwayantibody.com)

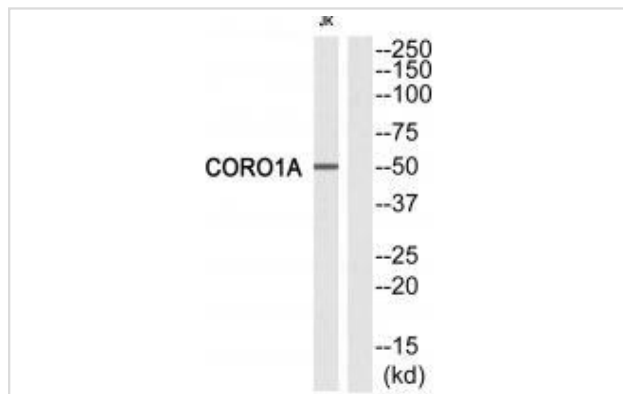
## Description

Product Name	CORO1A Antibody
Host Species	Rabbit
Clonality	Polyclonal
Purification	The antibody was affinity-purified from rabbit antiserum by affinity-chromatography using epitope-specific immunogen.
Applications	WB
Species Reactivity	Hu
Specificity	The antibody detects endogenous levels of total CORO1A protein.
Immunogen Type	Peptide
Immunogen Description	Synthesized peptide derived from Internal of human CORO1A.
Target Name	CORO1A
Other Names	CLABP; Clipin-A; CLIPINA; COR1A; CORO1
Accession No.	Swiss-Prot: P31146NCBI Gene ID: 11151
Uniprot	P31146
GeneID	11151;
SDS-PAGE MW	51kd
Concentration	1.0mg/ml
Formulation	Rabbit IgG in phosphate buffered saline (without Mg <sup>2+</sup> and Ca <sup>2+</sup> ), pH 7.4, 150mM NaCl, 0.02% sodium azide and 50% glycerol.
Storage	Store at -20°C

## Application Details

Western blotting: 1:500~1:3000

## Images



Western blot analysis of extracts from Jurkat cells, using CORO1A antibody #33746.

## Background

---

May be a crucial component of the cytoskeleton of highly motile cells, functioning both in the invagination of large pieces of plasma membrane, as well as in forming protrusions of the plasma membrane involved in cell locomotion. In mycobacteria-infected cells, its retention on the phagosomal membrane prevents fusion between phagosomes and lysosomes.

Suzuki K., FEBS Lett. 364:283-288(1995).

Grogan A., Submitted (DEC-1995) to the EMBL/GenBank/DDBJ databases.

Liau G., Submitted (AUG-1995) to the EMBL/GenBank/DDBJ databases.

---

Note: This product is for in vitro research use only