

## GRK6 Antibody

Catalog No: #33771

Package Size: #33771-1 50ul #33771-2 100ul

Orders: order@signalwayantibody.com

Support: tech@signalwayantibody.com

## Description

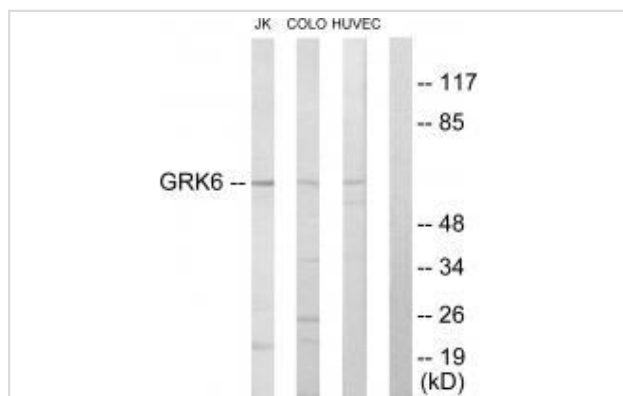
Product Name	GRK6 Antibody
Host Species	Rabbit
Clonality	Polyclonal
Purification	The antibody was affinity-purified from rabbit antiserum by affinity-chromatography using epitope-specific immunogen.
Applications	WB IF
Species Reactivity	Hu Ms Rt
Specificity	The antibody detects endogenous levels of total GRK6 protein.
Immunogen Type	Peptide
Immunogen Description	Synthesized peptide derived from N-terminal of human GRK6.
Target Name	GRK6
Other Names	EC 2.7.11.16; G-protein-coupled receptor kinase 6; GPRK6; kinase GRK6;
Accession No.	Swiss-Prot: P43250NCBI Gene ID: 2870
Uniprot	P43250
GeneID	2870;
SDS-PAGE MW	65kd
Concentration	1.0mg/ml
Formulation	Rabbit IgG in phosphate buffered saline (without Mg <sup>2+</sup> and Ca <sup>2+</sup> ), pH 7.4, 150mM NaCl, 0.02% sodium azide and 50% glycerol.
Storage	Store at -20°C

## Application Details

Western blotting: 1:500~1:3000

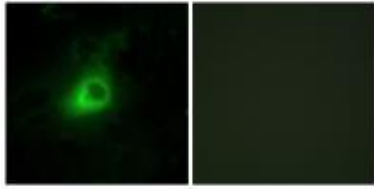
Immunofluorescence: 1:100~1:500

## Images



Western blot analysis of extracts from Jurkat cells, COLO205 cells and HUVEC cells, using GRK6 antibody #33771.

Immunofluorescence analysis of HeLa cells, using GRK6 antibody #33771.



## Background

Specifically phosphorylates the activated forms of G protein-coupled receptors. Such receptor phosphorylation initiates beta-arrestin-mediated receptor desensitization, internalization, and signaling events leading to their desensitization. Seems to be involved in the desensitization of D2-like dopamine receptors in striatum and chemokine receptor CXCR4 which is critical for CXCL12-induced cell chemotaxis. By similarity. Phosphorylates rhodopsin (RHO) (in vitro) and a non G-protein-coupled receptor: LRP6 during Wnt signaling (in vitro).

Benovic J.L., J. Biol. Chem. 268:19521-19527(1993).

Haribabu B., Proc. Natl. Acad. Sci. U.S.A. 90:9398-9402(1993).

Stoffel R.H., J. Biol. Chem. 269:27791-27794(1994).

Note: This product is for in vitro research use only