

## CEBPE Antibody

Catalog No: #33783

Package Size: #33783-1 50ul #33783-2 100ul

Orders: order@signalwayantibody.com

Support: tech@signalwayantibody.com

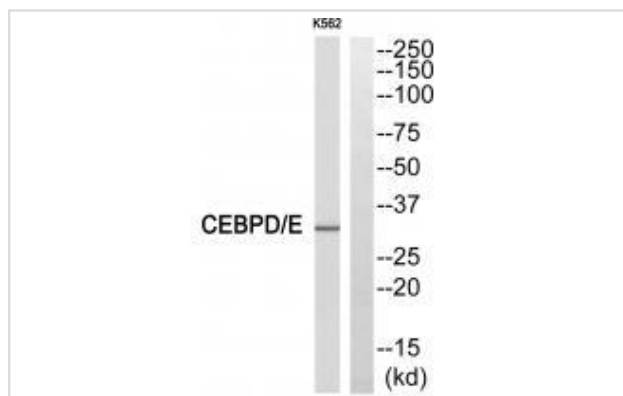
## Description

Product Name	CEBPE Antibody
Host Species	Rabbit
Clonality	Polyclonal
Purification	The antibody was affinity-purified from rabbit antiserum by affinity-chromatography using epitope-specific immunogen.
Applications	WB
Species Reactivity	Hu Ms Rt
Specificity	The antibody detects endogenous levels of total CEBPE protein.
Immunogen Type	Peptide
Immunogen Description	Synthesized peptide derived from internal of human CEBPE.
Target Name	CEBPE
Other Names	C/EBP delta;
Accession No.	Swiss-Prot: P49716NCBI Gene ID: 1052/1053
Uniprot	P49716
GeneID	1052;
SDS-PAGE MW	28kd
Concentration	1.0mg/ml
Formulation	Rabbit IgG in phosphate buffered saline (without Mg <sup>2+</sup> and Ca <sup>2+</sup> ), pH 7.4, 150mM NaCl, 0.02% sodium azide and 50% glycerol.
Storage	Store at -20°C

## Application Details

Western blotting: 1:500~1:3000

## Images



Western blot analysis of extracts from LOVO cells and RAW264.7 cells, using CEBPE antibody #33783.

## Background

---

C/EBP is a DNA-binding protein that recognizes two different motifs: the CCAAT homology common to many promoters and the enhanced core homology common to many enhancers. Important transcriptional activator in the regulation of genes involved in immune and inflammatory responses, may play an important role in the regulation of the several genes associated with activation and/or differentiation of macrophages.

Kinoshita S., Proc. Natl. Acad. Sci. U.S.A. 89:1473-1476(1992).

Cleutjens C.B., Genomics 16:520-523(1993).

Wang J.-M., Nucleic Acids Res. 34:217-231(2006).

---

Note: This product is for in vitro research use only