

ELL Antibody

Catalog No: #33821

Package Size: #33821-1 50ul #33821-2 100ul

Orders: order@signalwayantibody.comSupport: tech@signalwayantibody.com

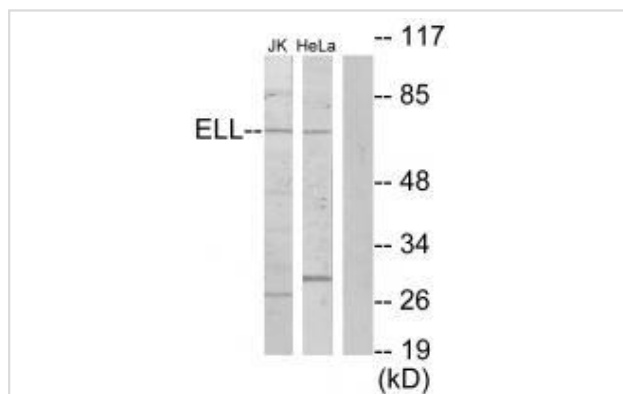
Description

Product Name	ELL Antibody
Host Species	Rabbit
Clonality	Polyclonal
Purification	The antibody was affinity-purified from rabbit antiserum by affinity-chromatography using epitope-specific immunogen.
Applications	WB
Species Reactivity	Hu Ms
Specificity	The antibody detects endogenous levels of total ELL protein.
Immunogen Type	Peptide
Immunogen Description	Synthesized peptide derived from internal of human ELL.
Target Name	ELL
Other Names	RNA polymerase II elongation factor ELL; RNA polymerase II elongation factor ELL; ELL; C19orf17;
Accession No.	Swiss-Prot: P55199NCBI Gene ID: 8178
Uniprot	P55199
GeneID	8178;
SDS-PAGE MW	65kd
Concentration	1.0mg/ml
Formulation	Rabbit IgG in phosphate buffered saline (without Mg ²⁺ and Ca ²⁺), pH 7.4, 150mM NaCl, 0.02% sodium azide and 50% glycerol.
Storage	Store at -20°C

Application Details

Western blotting: 1:500~1:3000

Images



Western blot analysis of extracts from Jurkat cells and HeLa cells, using ELL antibody #33821.

Background

Elongation factor component of the super elongation complex (SEC), a complex required to increase the catalytic rate of RNA polymerase II transcription by suppressing transient pausing by the polymerase at multiple sites along the DNA. ELL also plays an early role before its assembly into the SEC complex by stabilizing RNA polymerase II recruitment/initiation and entry into the pause site. Required to stabilize the pre-initiation complex and early elongation.

Thirman M.J., Proc. Natl. Acad. Sci. U.S.A. 91:12110-12114(1994).

Simone F., Blood 98:201-209(2001).

Kong S.E., Proc. Natl. Acad. Sci. U.S.A. 102:10094-10098(2005).

Note: This product is for in vitro research use only