

TMPRSS3 Antibody

Catalog No: #33829

Package Size: #33829-1 50ul #33829-2 100ul

Orders: order@signalwayantibody.comSupport: tech@signalwayantibody.com

Description

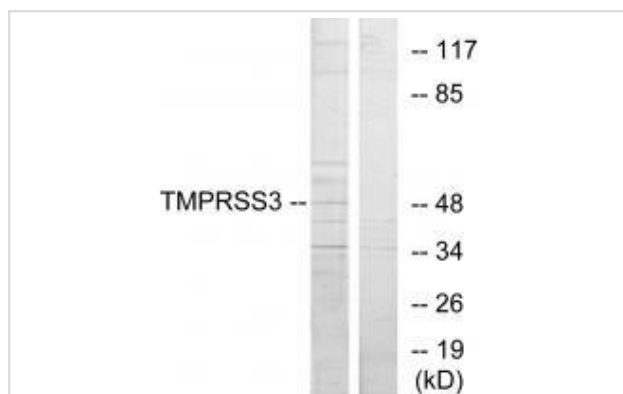
Product Name	TMPRSS3 Antibody
Host Species	Rabbit
Clonality	Polyclonal
Purification	The antibody was affinity-purified from rabbit antiserum by affinity-chromatography using epitope-specific immunogen.
Applications	WB IF
Species Reactivity	Hu Ms
Specificity	The antibody detects endogenous levels of total TMPRSS3 protein.
Immunogen Type	Peptide
Immunogen Description	Synthesized peptide derived from C-terminal of human TMPRSS3.
Target Name	TMPRSS3
Other Names	Transmembrane protease; serine 3; EC 3.4.21.-; Serine protease TADG-12; Tumor-associated differentially-expressed gene 12 protein
Accession No.	Swiss-Prot: P57727NCBI Gene ID: 64699
Uniprot	P57727
GeneID	64699;
SDS-PAGE MW	49kd
Concentration	1.0mg/ml
Formulation	Rabbit IgG in phosphate buffered saline (without Mg ²⁺ and Ca ²⁺), pH 7.4, 150mM NaCl, 0.02% sodium azide and 50% glycerol.
Storage	Store at -20°C

Application Details

Western blotting: 1:500~1:3000

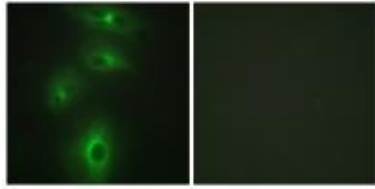
Immunofluorescence: 1:100~1:500

Images



Western blot analysis of extracts from HUVEC cells, using TMPRSS3 antibody #33829.

Immunofluorescence analysis of HeLa cells, using TMPRSS3 antibody #33829.



Background

Probable serine protease that play a role in hearing. Acts as a permissive factor for cochlear hair cells survival and activation at the onset of hearing and is required for saccular hair cell survival By similarity. Activates ENaC (in vitro).

Underwood L.J., Biochim. Biophys. Acta 1502:337-350(2000).

Scott H.S., Nat. Genet. 27:59-63(2001).

Clark H.F., Genome Res. 13:2265-2270(2003).

Note: This product is for in vitro research use only