

## CKS1 Antibody

Catalog No: #33830

Package Size: #33830-1 50ul #33830-2 100ul

Orders: [order@signalwayantibody.com](mailto:order@signalwayantibody.com)Support: [tech@signalwayantibody.com](mailto:tech@signalwayantibody.com)

## Description

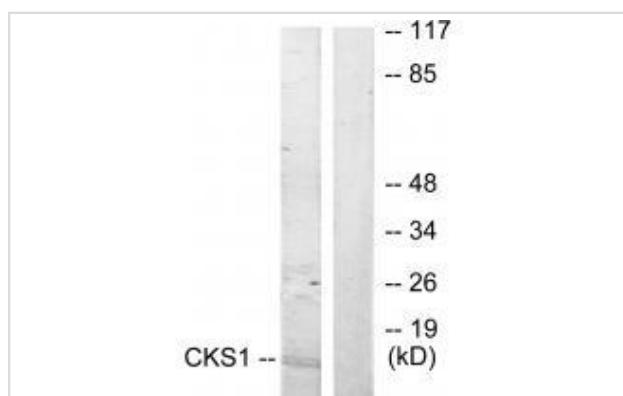
Product Name	CKS1 Antibody
Host Species	Rabbit
Clonality	Polyclonal
Purification	The antibody was affinity-purified from rabbit antiserum by affinity-chromatography using epitope-specific immunogen.
Applications	WB IF
Species Reactivity	Hu Ms
Specificity	The antibody detects endogenous levels of total CKS1 protein.
Immunogen Type	Peptide
Immunogen Description	Synthesized peptide derived from N-terminal of human CKS1.
Target Name	CKS1
Other Names	CKS-1; CKS1B; cyclin-dependent kinases regulatory subunit 1;
Accession No.	Swiss-Prot: P61024NCBI Gene ID: 1163
Uniprot	P61024
GeneID	1163;
SDS-PAGE MW	9kd
Concentration	1.0mg/ml
Formulation	Rabbit IgG in phosphate buffered saline (without Mg <sup>2+</sup> and Ca <sup>2+</sup> ), pH 7.4, 150mM NaCl, 0.02% sodium azide and 50% glycerol.
Storage	Store at -20°C

## Application Details

Western blotting: 1:500~1:3000

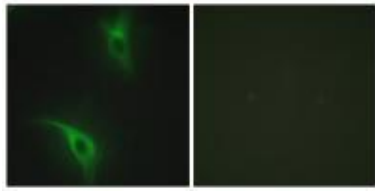
Immunofluorescence: 1:100~1:500

## Images



Western blot analysis of extracts from Jurkat cells, treated with serum (20%, 15mins), using CKS1 antibody #33830.

Immunofluorescence analysis of HeLa cells, using CKS1 antibody #33830.



## Background

Binds to the catalytic subunit of the cyclin dependent kinases and is essential for their biological function.

Richardson H.E., Genes Dev. 4:1332-1344(1990).

The MGC Project Team, Genome Res. 14:2121-2127(2004).

Arvai A.S., J. Mol. Biol. 249:835-842(1995).

Note: This product is for in vitro research use only