

## IRX1 Antibody

Catalog No: #33835

Package Size: #33835-1 50ul #33835-2 100ul

Orders: [order@signalwayantibody.com](mailto:order@signalwayantibody.com)Support: [tech@signalwayantibody.com](mailto:tech@signalwayantibody.com)

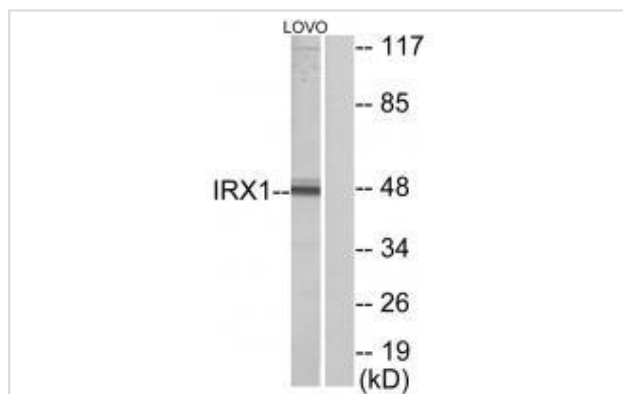
## Description

Product Name	IRX1 Antibody
Host Species	Rabbit
Clonality	Polyclonal
Purification	The antibody was affinity-purified from rabbit antiserum by affinity-chromatography using epitope-specific immunogen.
Applications	WB
Species Reactivity	Hu Ms
Specificity	The antibody detects endogenous levels of total IRX1 protein.
Immunogen Type	Peptide
Immunogen Description	Synthesized peptide derived from internal of human IRX1.
Target Name	IRX1
Other Names	ICSBP; ICSBP1; IRF-8; interferon consensus sequence-binding; interferon regulatory factor 8
Accession No.	Swiss-Prot: P78414NCBI Gene ID: 79192
Uniprot	P78414
GeneID	79192;
SDS-PAGE MW	47kd
Concentration	1.0mg/ml
Formulation	Rabbit IgG in phosphate buffered saline (without Mg <sup>2+</sup> and Ca <sup>2+</sup> ), pH 7.4, 150mM NaCl, 0.02% sodium azide and 50% glycerol.
Storage	Store at -20°C

## Application Details

Western blotting: 1:500~1:3000

## Images



Western blot analysis of extracts from LOVO cells, using IRX1 antibody #33835.

## Background

---

a member of the Iroquois homeobox protein family. Homeobox genes in this family are involved in pattern formation in the embryo. The gene product has been identified as a tumor suppressor in gastric (PMID: 21602894, 20440264) and head and neck cancers (PMID: 18559491). A pseudogene of this gene is located on chromosome 13.

Hansen L., Submitted (JUL-2003) to the EMBL/GenBank/DDBJ databases.

The MGC Project Team, Genome Res. 14:2121-2127(2004).

Lewis M.T., Submitted (MAR-1997) to the EMBL/GenBank/DDBJ databases.

---

Note: This product is for in vitro research use only