

CDKL1 Antibody

Catalog No: #33842



Package Size: #33842-1 50ul #33842-2 100ul

Orders: order@signalwayantibody.com
Support: tech@signalwayantibody.com

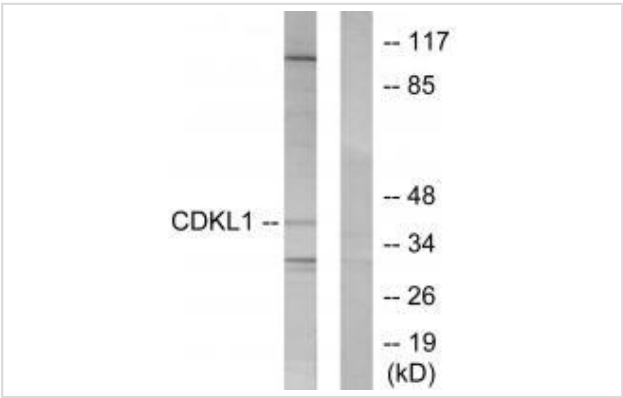
Description

Product Name	CDKL1 Antibody
Host Species	Rabbit
Clonality	Polyclonal
Purification	The antibody was affinity-purified from rabbit antiserum by affinity-chromatography using epitope-specific immunogen.
Applications	WB
Species Reactivity	Hu Rt
Specificity	The antibody detects endogenous levels of total CDKL1 protein.
Immunogen Type	Peptide
Immunogen Description	Synthesized peptide derived from internal of human CDKL1.
Target Name	CDKL1
Other Names	Cyclin-dependent kinase-like 1; EC 2.7.11.22; Serine/threonine-protein kinase KKIALRE; Protein kinase p42 KKIALRE; CDKL1
Accession No.	Swiss-Prot: Q00532NCBI Gene ID: 8814
Uniprot	Q00532
GeneID	8814;
SDS-PAGE MW	42kd
Concentration	1.0mg/ml
Formulation	Rabbit IgG in phosphate buffered saline (without Mg2+ and Ca2+), pH 7.4, 150mM NaCl, 0.02% sodium azide and 50% glycerol.
Storage	Store at -20°C

Application Details

Western blotting: 1:500~1:3000

Images



Western blot analysis of extracts from COLO205 cells, using CDKL1 antibody #33842.

Background

This gene product is a member of a large family of CDC2-related serine/threonine protein kinases. It accumulates primarily in the nucleus. Two transcript variants encoding different isoforms have been found for this gene.

Meyerson M., EMBO J. 11:2909-2917(1992).

Livingston R.J., Submitted (JAN-2004) to the EMBL/GenBank/DDBJ databases.

Taglienti C.A., Oncogene 13:2563-2574(1996).

Note: This product is for in vitro research use only