

CREM Antibody

Catalog No: #33850

Package Size: #33850-1 50ul #33850-2 100ul

Orders: order@signalwayantibody.comSupport: tech@signalwayantibody.com

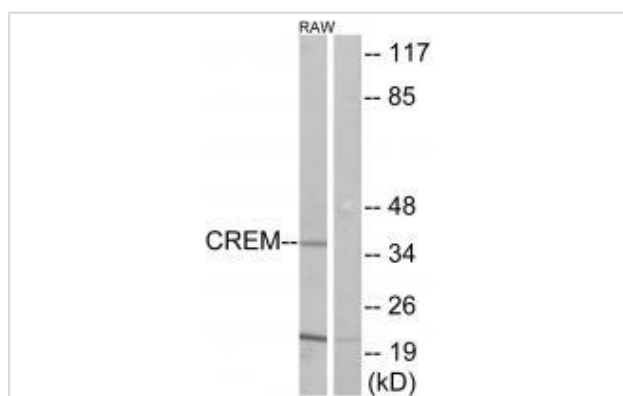
Description

Product Name	CREM Antibody
Host Species	Rabbit
Clonality	Polyclonal
Purification	The antibody was affinity-purified from rabbit antiserum by affinity-chromatography using epitope-specific immunogen.
Applications	WB
Species Reactivity	Hu Ms Rt
Specificity	The antibody detects endogenous levels of total CREM protein.
Immunogen Type	Peptide
Immunogen Description	Synthesized peptide derived from internal of human CREM.
Target Name	CREM
Other Names	CREM-alpha; cAMP-responsive element modulator; cAMP-responsive element modulator; alpha isoform CREM; CREM-beta
Accession No.	Swiss-Prot: Q03060NCBI Gene ID: 1390
Uniprot	Q03060
GeneID	1390;
SDS-PAGE MW	34kd
Concentration	1.0mg/ml
Formulation	Rabbit IgG in phosphate buffered saline (without Mg2+ and Ca2+), pH 7.4, 150mM NaCl, 0.02% sodium azide and 50% glycerol.
Storage	Store at -20°C

Application Details

Western blotting: 1:500~1:3000

Images



Western blot analysis of extracts from K562 cells, using CREM antibody #33850.

Background

Transcriptional regulator that binds the cAMP response element (CRE), a sequence present in many viral and cellular promoters. Isoforms are either transcriptional activators or repressors. Plays a role in spermatogenesis and is involved in spermatid maturation By similarity.

Masquillier D., Cell Growth Differ. 4:931-937(1993).

Meyer T.E., Nucleic Acids Res. 20:6106-6106(1992).

Fujimoto T., J. Biochem. 115:298-303(1994).

Note: This product is for in vitro research use only