

SRY Antibody

Catalog No: #33859

Package Size: #33859-1 50ul #33859-2 100ul

Orders: order@signalwayantibody.comSupport: tech@signalwayantibody.com

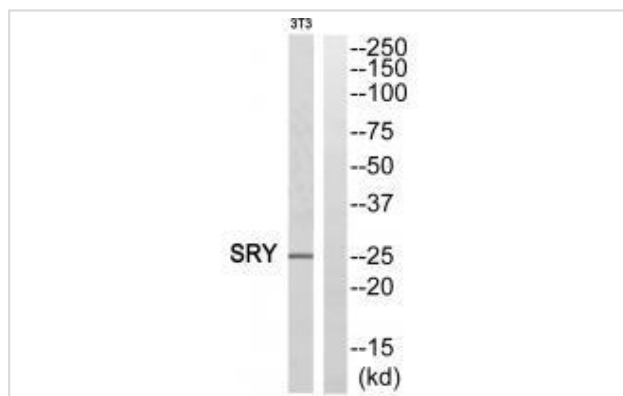
Description

Product Name	SRY Antibody
Host Species	Rabbit
Clonality	Polyclonal
Purification	The antibody was affinity-purified from rabbit antiserum by affinity-chromatography using epitope-specific immunogen.
Applications	WB
Species Reactivity	Hu
Specificity	The antibody detects endogenous levels of total SRY protein.
Immunogen Type	Peptide
Immunogen Description	Synthesized peptide derived from internal of human SRY.
Target Name	SRY
Other Names	Delayed-early protein HRS; HRS; Pre-mRNA splicing factor SRP40; SFR5; SRP40
Accession No.	Swiss-Prot: Q05066NCBI Gene ID: 6736
Uniprot	Q05066
GeneID	6736;
SDS-PAGE MW	37kd
Concentration	1.0mg/ml
Formulation	Rabbit IgG in phosphate buffered saline (without Mg ²⁺ and Ca ²⁺), pH 7.4, 150mM NaCl, 0.02% sodium azide and 50% glycerol.
Storage	Store at -20°C

Application Details

Western blotting: 1:500~1:3000

Images



Western blot analysis of extracts from HeLa cells, using SRY antibody #33859.

Background

Transcriptional regulator that controls a genetic switch in male development. It is necessary and sufficient for initiating male sex determination by directing the development of supporting cell precursors (pre-Sertoli cells) as Sertoli rather than granulosa cells By similarity. In male adult brain involved in the maintenance of motor functions of dopaminergic neurons By similarity. Involved in different aspects of gene regulation including promoter activation or repression By similarity. Promotes DNA bending. SRY HMG box recognizes DNA by partial intercalation in the minor groove. Also involved in pre-mRNA splicing. Binds to the DNA consensus sequence 5'-[AT]AACAA[AT]-3'.

Sinclair A.H., Nature 346:240-244(1990).

Su H., Am. J. Hum. Genet. 52:24-38(1993).

Behlke M.A., Genomics 17:736-739(1993).

Note: This product is for in vitro research use only