

E2F2 Antibody

Catalog No: #33877

Package Size: #33877-1 50ul #33877-2 100ul

Orders: order@signalwayantibody.comSupport: tech@signalwayantibody.com

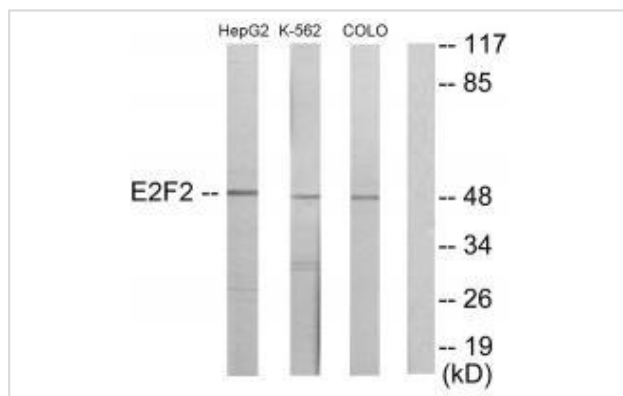
Description

Product Name	E2F2 Antibody
Host Species	Rabbit
Clonality	Polyclonal
Purification	The antibody was affinity-purified from rabbit antiserum by affinity-chromatography using epitope-specific immunogen.
Applications	WB
Species Reactivity	Hu Ms
Specificity	The antibody detects endogenous levels of total E2F2 protein.
Immunogen Type	Peptide
Immunogen Description	Synthesized peptide derived from internal of human E2F2.
Target Name	E2F2
Other Names	Transcription factor E2F2; E2F-2;
Accession No.	Swiss-Prot: Q14209NCBI Gene ID: 1870
Uniprot	Q14209
GeneID	1870;
SDS-PAGE MW	48kd
Concentration	1.0mg/ml
Formulation	Rabbit IgG in phosphate buffered saline (without Mg ²⁺ and Ca ²⁺), pH 7.4, 150mM NaCl, 0.02% sodium azide and 50% glycerol.
Storage	Store at -20°C

Application Details

Western blotting: 1:500~1:3000

Images



Western blot analysis of extracts from HepG2 cells, K562 cells and COLO205 cells, using E2F2 antibody #33877.

Background

Transcription activator that binds DNA cooperatively with DP proteins through the E2 recognition site, 5'-TTTC[CG]CGC-3' found in the promoter region of a number of genes whose products are involved in cell cycle regulation or in DNA replication. The DRTF1/E2F complex functions in the control of cell-cycle progression from G1 to S phase. E2F2 binds specifically to RB1 in a cell-cycle dependent manner.

Ivey-Hoyle M., Mol. Cell. Biol. 13:7802-7812(1993).

Gregory S.G., Nature 441:315-321(2006).

Novy M., Mol. Biol. Cell 16:2181-2190(2005).

Note: This product is for in vitro research use only