

## TAF1A Antibody

Catalog No: #33901

Package Size: #33901-1 50ul #33901-2 100ul

Orders: [order@signalwayantibody.com](mailto:order@signalwayantibody.com)Support: [tech@signalwayantibody.com](mailto:tech@signalwayantibody.com)

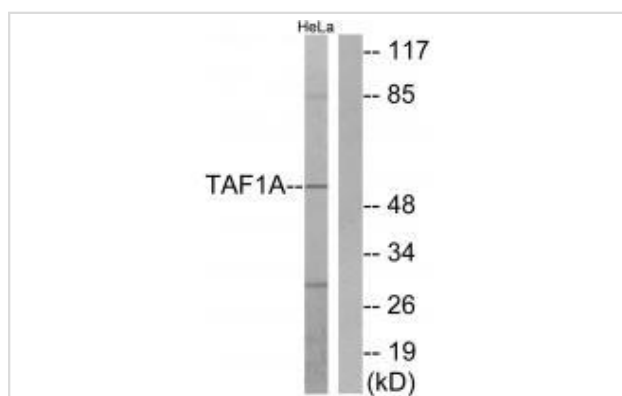
## Description

Product Name	TAF1A Antibody
Host Species	Rabbit
Clonality	Polyclonal
Purification	The antibody was affinity-purified from rabbit antiserum by affinity-chromatography using epitope-specific immunogen.
Applications	WB
Species Reactivity	Hu Rt
Specificity	The antibody detects endogenous levels of total TAF1A protein.
Immunogen Type	Peptide
Immunogen Description	Synthesized peptide derived from internal of human TAF1A.
Target Name	TAF1A
Other Names	TATA box-binding protein-associated factor 1A; TBP-associated factor 1A; TBP-associated factor RNA polymerase I 48 kDa; TAFI48; Transcription factor SL1
Accession No.	Swiss-Prot: Q15573NCBI Gene ID: 9015
Uniprot	Q15573
GeneID	9015;
SDS-PAGE MW	53kd
Concentration	1.0mg/ml
Formulation	Rabbit IgG in phosphate buffered saline (without Mg <sup>2+</sup> and Ca <sup>2+</sup> ), pH 7.4, 150mM NaCl, 0.02% sodium azide and 50% glycerol.
Storage	Store at -20°C

## Application Details

Western blotting: 1:500~1:3000

## Images



Western blot analysis of extracts from HeLa cells, using TAF1A antibody #33901.

## Background

Component of the transcription factor SL1/TIF-IB complex, which is involved in the assembly of the PIC (preinitiation complex) during RNA polymerase I-dependent transcription. The rate of PIC formation probably is primarily dependent on the rate of association of SL1/TIF-IB with the rDNA promoter. SL1/TIF-IB is involved in stabilization of nucleolar transcription factor 1/UBTF on rDNA. Formation of SL1/TIF-IB excludes the association of TBP with TFIID subunits.

Comai L., Science 266:1966-1972(1994).

Ota T., Nat. Genet. 36:40-45(2004).

Gregory S.G., Nature 441:315-321(2006).

---

Note: This product is for in vitro research use only