

MED1 Antibody

Catalog No: #33902

Package Size: #33902-1 50ul #33902-2 100ul

Orders: order@signalwayantibody.comSupport: tech@signalwayantibody.com

Description

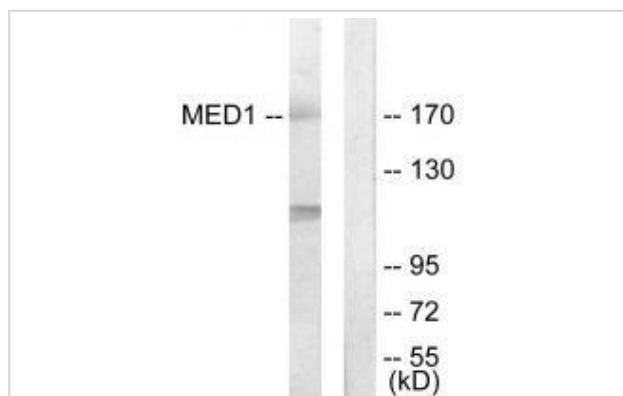
Product Name	MED1 Antibody
Host Species	Rabbit
Clonality	Polyclonal
Purification	The antibody was affinity-purified from rabbit antiserum by affinity-chromatography using epitope-specific immunogen.
Applications	WB IHC
Species Reactivity	Hu Ms
Specificity	The antibody detects endogenous levels of total MED1 protein.
Immunogen Type	Peptide
Immunogen Description	Synthesized peptide derived from internal of human MED1.
Target Name	MED1
Other Names	Mediator complex subunit 1;
Accession No.	Swiss-Prot: Q15648NCBI Gene ID: 5469
Uniprot	Q15648
GeneID	5469;
SDS-PAGE MW	170kd
Concentration	1.0mg/ml
Formulation	Rabbit IgG in phosphate buffered saline (without Mg ²⁺ and Ca ²⁺), pH 7.4, 150mM NaCl, 0.02% sodium azide and 50% glycerol.
Storage	Store at -20°C

Application Details

Western blotting: 1:500~1:3000

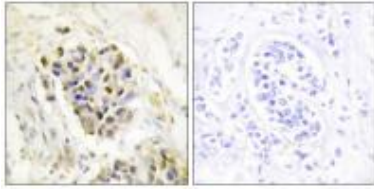
Immunohistochemistry: 1:50~1:100

Images



Western blot analysis of extracts from Jurkat cells, using MED1 antibody #33902.

Immunohistochemistry analysis of paraffin-embedded human breast carcinoma tissue using MED1 antibody #33902.



Background

Component of the Mediator complex, a coactivator involved in the regulated transcription of nearly all RNA polymerase II-dependent genes. Mediator functions as a bridge to convey information from gene-specific regulatory proteins to the basal RNA polymerase II transcription machinery. Mediator is recruited to promoters by direct interactions with regulatory proteins and serves as a scaffold for the assembly of a functional preinitiation complex with RNA polymerase II and the general transcription factors.

Drane P., *Oncogene* 15:3013-3024(1997).

Yuan C.-X., *Proc. Natl. Acad. Sci. U.S.A.* 95:7939-7944(1998).

Naeaeer A.M., *Nature* 398:828-832(1999).

Note: This product is for in vitro research use only