

## DOK6 Antibody

Catalog No: #33939

Package Size: #33939-1 50ul #33939-2 100ul

Orders: order@signalwayantibody.com

Support: tech@signalwayantibody.com

## Description

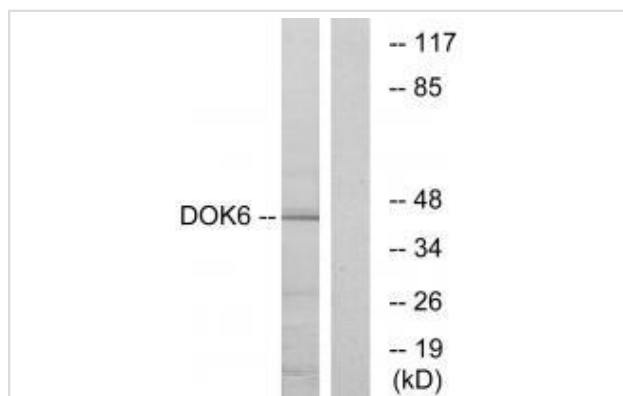
Product Name	DOK6 Antibody
Host Species	Rabbit
Clonality	Polyclonal
Purification	The antibody was affinity-purified from rabbit antiserum by affinity-chromatography using epitope-specific immunogen.
Applications	WB IF
Species Reactivity	Hu Ms
Specificity	The antibody detects endogenous levels of total DOK6 protein.
Immunogen Type	Peptide
Immunogen Description	Synthesized peptide derived from internal of human DOK6.
Target Name	DOK6
Other Names	Downstream of tyrosine kinase 6; Docking protein 6; DOK6; DOK5L;
Accession No.	Swiss-Prot: Q6PKX4NCBI Gene ID: 220164
Uniprot	Q6PKX4
GeneID	220164;
SDS-PAGE MW	43kd
Concentration	1.0mg/ml
Formulation	Rabbit IgG in phosphate buffered saline (without Mg <sup>2+</sup> and Ca <sup>2+</sup> ), pH 7.4, 150mM NaCl, 0.02% sodium azide and 50% glycerol.
Storage	Store at -20°C

## Application Details

Western blotting: 1:500~1:3000

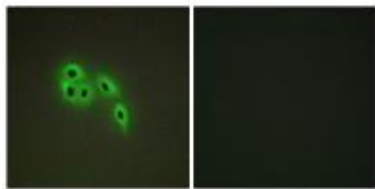
Immunofluorescence: 1:100~1:500

## Images



Western blot analysis of extracts from COLO cells, using DOK6 antibody #33939.

Immunofluorescence analysis of A549 cells, using DOK6 antibody #33939.



## Background

DOK proteins are enzymatically inert adaptor or scaffolding proteins. They provide a docking platform for the assembly of multimolecular signaling complexes. DOK6 promotes Ret-mediated neurite growth. May have a role in brain development and/or maintenance.

Crowder R.J., J. Biol. Chem. 279:42072-42081(2004).

The MGC Project Team, Genome Res. 14:2121-2127(2004).

Ota T., Nat. Genet. 36:40-45(2004).

Note: This product is for in vitro research use only