

ADCK2 Antibody

Catalog No: #33948

Package Size: #33948-1 50ul #33948-2 100ul

Orders: order@signalwayantibody.comSupport: tech@signalwayantibody.com

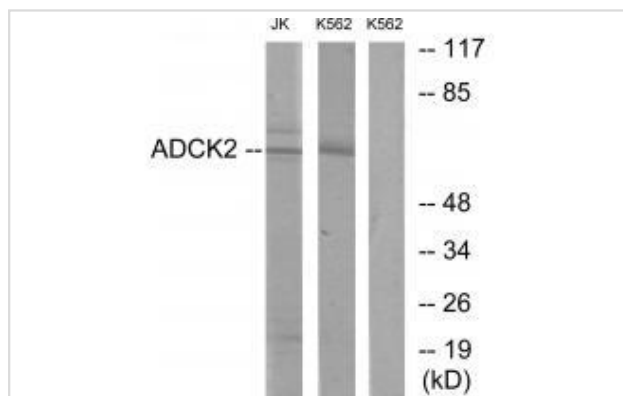
Description

Product Name	ADCK2 Antibody
Host Species	Rabbit
Clonality	Polyclonal
Purification	The antibody was affinity-purified from rabbit antiserum by affinity-chromatography using epitope-specific immunogen.
Applications	WB
Species Reactivity	Hu
Specificity	The antibody detects endogenous levels of total ADCK2 protein.
Immunogen Type	Peptide
Immunogen Description	Synthesized peptide derived from internal of human ADCK2.
Target Name	ADCK2
Other Names	Uncharacterized aarF domain-containing protein kinase 2; EC 2.7.11.-; ADCK2; AARF;
Accession No.	Swiss-Prot: Q7Z695NCBI Gene ID: 90956
Uniprot	Q7Z695
GeneID	90956;
SDS-PAGE MW	69kd
Concentration	1.0mg/ml
Formulation	Rabbit IgG in phosphate buffered saline (without Mg ²⁺ and Ca ²⁺), pH 7.4, 150mM NaCl, 0.02% sodium azide and 50% glycerol.
Storage	Store at -20°C

Application Details

Western blotting: 1:500~1:3000

Images



Western blot analysis of extracts from Jurkat cells and K562 cells, using ADCK2 antibody #33948.

Background

The function of this protein is not yet clear. It is not known if it has protein kinase activity and what type of substrate it would phosphorylate (Ser, Thr or Tyr).

Huang C.Q., Submitted (MAY-2003) to the EMBL/GenBank/DDBJ databases.

Hillier L.W., Nature 424:157-164(2003).

The MGC Project Team, Genome Res. 14:2121-2127(2004).

Note: This product is for in vitro research use only