

MAGI2 Antibody

Catalog No: #33953

Package Size: #33953-1 50ul #33953-2 100ul

Orders: order@signalwayantibody.comSupport: tech@signalwayantibody.com

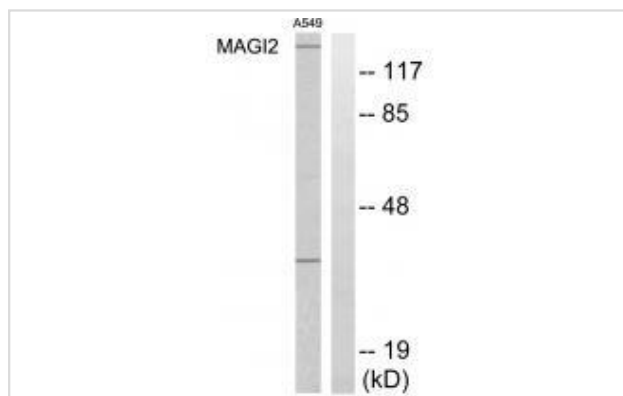
Description

Product Name	MAGI2 Antibody
Host Species	Rabbit
Clonality	Polyclonal
Purification	The antibody was affinity-purified from rabbit antiserum by affinity-chromatography using epitope-specific immunogen.
Applications	WB
Species Reactivity	Hu Ms Rt
Specificity	The antibody detects endogenous levels of total MAGI2 protein.
Immunogen Type	Peptide
Immunogen Description	Synthesized peptide derived from internal of human MAGI2.
Target Name	MAGI2
Other Names	Atrophin-1 interacting protein 1; Atrophin-1 interacting protein A; KIAA0705; MAGI-2; MAGI2
Accession No.	Swiss-Prot: Q86UL8NCBI Gene ID: 9863
Uniprot	Q86UL8
GeneID	9863;
SDS-PAGE MW	159kd
Concentration	1.0mg/ml
Formulation	Rabbit IgG in phosphate buffered saline (without Mg ²⁺ and Ca ²⁺), pH 7.4, 150mM NaCl, 0.02% sodium azide and 50% glycerol.
Storage	Store at -20°C

Application Details

Western blotting: 1:500~1:3000

Images



Western blot analysis of extracts from HT-29 cells, using MAGI2 antibody #33953.

Background

Seems to act as scaffold molecule at synaptic junctions by assembling neurotransmitter receptors and cell adhesion proteins. May play a role in regulating activin-mediated signaling in neuronal cells. Enhances the ability of PTEN to suppress AKT1 activation. Plays a role in nerve growth factor (NGF)-induced recruitment of RAPGEF2 to late endosomes and neurite outgrowth.

Florindo C.S., Submitted (JUL-2003) to the EMBL/GenBank/DDBJ databases.

The MGC Project Team, Genome Res. 14:2121-2127(2004).

Devroe E., J. Biol. Chem. 279:24444-24451(2004).

Note: This product is for in vitro research use only