

CDKL3 Antibody

Catalog No: #33959

Package Size: #33959-1 50ul #33959-2 100ul

Orders: order@signalwayantibody.comSupport: tech@signalwayantibody.com

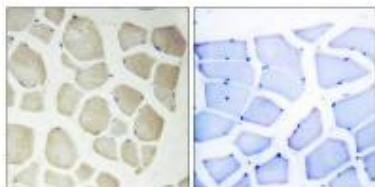
Description

Product Name	CDKL3 Antibody
Host Species	Rabbit
Clonality	Polyclonal
Purification	The antibody was affinity-purified from rabbit antiserum by affinity-chromatography using epitope-specific immunogen.
Applications	IHC
Species Reactivity	Hu
Specificity	The antibody detects endogenous levels of total CDKL3 protein.
Immunogen Type	Peptide
Immunogen Description	Synthesized peptide derived from internal of human CDKL3.
Target Name	CDKL3
Other Names	Cyclin-dependent kinase-like 3; EC 2.7.11.22; Serine/threonine protein kinase NKIAMRE; CDKL3; NKIAMRE
Accession No.	Swiss-Prot: Q8IVW4NCBI Gene ID: 51265
Uniprot	Q8IVW4
GeneID	51265;
SDS-PAGE MW	68kd
Concentration	1.0mg/ml
Formulation	Rabbit IgG in phosphate buffered saline (without Mg ²⁺ and Ca ²⁺), pH 7.4, 150mM NaCl, 0.02% sodium azide and 50% glycerol.
Storage	Store at -20°C

Application Details

Immunohistochemistry: 1:50~1:100

Images



Immunohistochemistry analysis of paraffin-embedded human skeletal muscle tissue, using CDKL3 antibody #33959.

Background

The protein encoded by this gene is a member of cyclin-dependent protein kinase (CDK) family. CDK family members are highly similar to the gene products of *Saccharomyces cerevisiae* cdc28, and *Schizosaccharomyces pombe* cdc2, and are known to be important regulators of cell cycle progression. This gene was identified as a gene absent in leukemic patients with chromosome 5q deletion. This loss may be an important determinant of dysmyelopoiesis. Alternative splicing results in multiple transcript variants encoding different isoforms.

Midmer M., Submitted (FEB-1999) to the EMBL/GenBank/DDBJ databases.

The MGC Project Team, *Genome Res.* 14:2121-2127(2004).

Greenman C., *Nature* 446:153-158(2007).

Note: This product is for in vitro research use only