

TUSC5 Antibody

Catalog No: #33962

Package Size: #33962-1 50ul #33962-2 100ul

Orders: order@signalwayantibody.comSupport: tech@signalwayantibody.com

Description

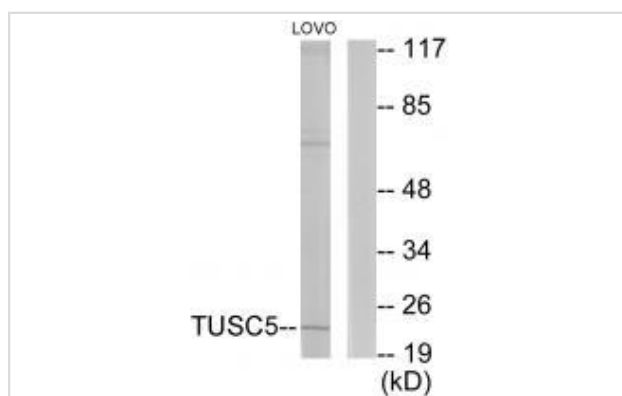
Product Name	TUSC5 Antibody
Host Species	Rabbit
Clonality	Polyclonal
Purification	The antibody was affinity-purified from rabbit antiserum by affinity-chromatography using epitope-specific immunogen.
Applications	WB IF
Species Reactivity	Hu
Specificity	The antibody detects endogenous levels of total TUSC5 protein.
Immunogen Type	Peptide
Immunogen Description	Synthesized peptide derived from internal of human TUSC5.
Target Name	TUSC5
Other Names	Tumor suppressor candidate 5; Protein located at seventeen-p-thirteen point three 1; TUSC5; LOST1;
Accession No.	Swiss-Prot: Q8IXB3NCBI Gene ID: 286753
Uniprot	Q8IXB3
GeneID	286753;
SDS-PAGE MW	22kd
Concentration	1.0mg/ml
Formulation	Rabbit IgG in phosphate buffered saline (without Mg ²⁺ and Ca ²⁺), pH 7.4, 150mM NaCl, 0.02% sodium azide and 50% glycerol.
Storage	Store at -20°C

Application Details

Western blotting: 1:500~1:3000

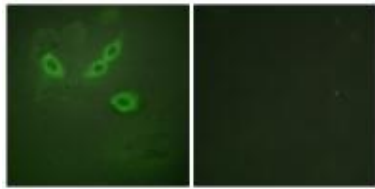
Immunofluorescence: 1:100~1:500

Images



Western blot analysis of extracts from LOVO cells, using TUSC5 antibody #33962.

Immunofluorescence analysis of HeLa cells, using TUSC5 antibody #33962.



Background

May be involved in fat metabolism By similarity.

Konishi H., Oncogene 22:1892-1905(2003).

Note: This product is for in vitro research use only