

SMG7 Antibody

Catalog No: #34002

Package Size: #34002-1 50ul #34002-2 100ul

Orders: order@signalwayantibody.comSupport: tech@signalwayantibody.com

Description

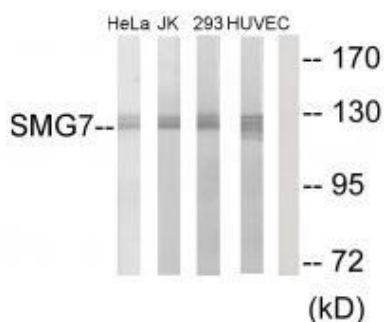
Product Name	SMG7 Antibody
Host Species	Rabbit
Clonality	Polyclonal
Purification	The antibody was affinity-purified from rabbit antiserum by affinity-chromatography using epitope-specific immunogen.
Applications	WB IF
Species Reactivity	Hu
Specificity	The antibody detects endogenous levels of total SMG7 protein.
Immunogen Type	Peptide
Immunogen Description	Synthesized peptide derived from internal of human SMG7.
Target Name	SMG7
Other Names	C1orf16; EST1C; KIAA0250;
Accession No.	Swiss-Prot: Q92540NCBI Gene ID: 9887
Uniprot	Q92540
GeneID	9887;
SDS-PAGE MW	127kd
Concentration	1.0mg/ml
Formulation	Rabbit IgG in phosphate buffered saline (without Mg ²⁺ and Ca ²⁺), pH 7.4, 150mM NaCl, 0.02% sodium azide and 50% glycerol.
Storage	Store at -20°C

Application Details

Western blotting: 1:500~1:3000

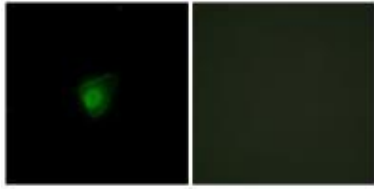
Immunofluorescence: 1:100~1:500

Images



Western blot analysis of extracts from HeLa cells, Jurkat cells, 293 cells and HUVEC cells, using SMG7 antibody #34002.

Immunofluorescence analysis of HepG2 cells, using SMG7 antibody #34002.



Background

Plays a role in nonsense-mediated mRNA decay. Recruits UPF1 to cytoplasmic mRNA decay bodies. Together with SMG5 is thought to provide a link to the mRNA degradation machinery involving exonucleolytic pathways, and to serve as an adapter for UPF1 to protein phosphatase 2A (PP2A), thereby triggering UPF1 dephosphorylation.

Ohnishi T., Mol. Cell 12:1187-1200(2003).

Nagase T., DNA Res. 3:321-329(1996).

Nakajima D., DNA Res. 9:99-106(2002).

Note: This product is for in vitro research use only