

AP2C Antibody

Catalog No: #34004

Package Size: #34004-1 50ul #34004-2 100ul

Orders: order@signalwayantibody.comSupport: tech@signalwayantibody.com

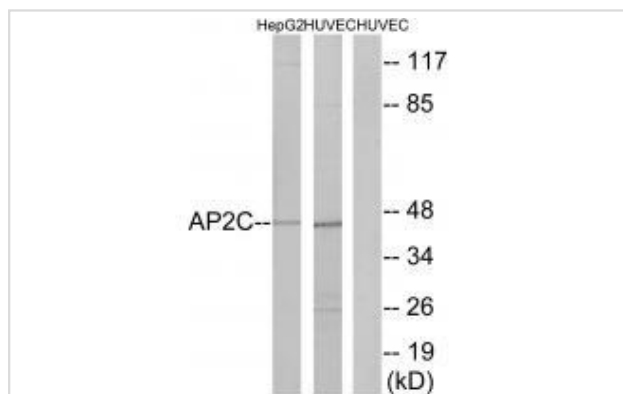
Description

Product Name	AP2C Antibody
Host Species	Rabbit
Clonality	Polyclonal
Purification	The antibody was affinity-purified from rabbit antiserum by affinity-chromatography using epitope-specific immunogen.
Applications	WB
Species Reactivity	Hu Ms Rt
Specificity	The antibody detects endogenous levels of total AP2C protein.
Immunogen Type	Peptide
Immunogen Description	Synthesized peptide derived from internal of human AP2C.
Target Name	AP2C
Other Names	AP2-gamma; Activating enhancer-binding protein 2 gamma; Transcription factor ERF-1;
Accession No.	Swiss-Prot: Q92754NCBI Gene ID: 7022
Uniprot	Q92754
GeneID	7022;
SDS-PAGE MW	45kd
Concentration	1.0mg/ml
Formulation	Rabbit IgG in phosphate buffered saline (without Mg ²⁺ and Ca ²⁺), pH 7.4, 150mM NaCl, 0.02% sodium azide and 50% glycerol.
Storage	Store at -20°C

Application Details

Western blotting: 1:500~1:3000

Images



Western blot analysis of extracts from HepG2 cells and HUVEC cells, using AP2C antibody #34004.

Background

Sequence-specific DNA-binding protein that interacts with inducible viral and cellular enhancer elements to regulate transcription of selected genes. AP-2 factors bind to the consensus sequence 5'-GCCNNNGGC-3' and activate genes involved in a large spectrum of important biological functions including proper eye, face, body wall, limb and neural tube development. They also suppress a number of genes including MCAM/MUC18, C/EBP alpha and MYC.

Williamson J.A., Genomics 35:262-264(1996).

McPherson L.A., Proc. Natl. Acad. Sci. U.S.A. 94:4342-4347(1997).

Deloukas P., Nature 414:865-871(2001).

Note: This product is for in vitro research use only